



**PORTABLE
INSERTION
P R O B E**



Quick Study

The PIP™ is a multipurpose instrument designed to easily and safely insert a variety of sampling and sensing devices into a pressurized pipeline or vessel. It utilizes a pressure balance technique instead of the bulky pneumatic/hydraulic cylinder and dynamic seal approach used by competitive devices. Insertion of a sampling probe or sensor into a pressurized system consist of three quick and easy steps. The PIP base is screwed into a 1/2" NPT or larger full opening valve, the valve is opened to allow the PIP to pressurize to line pressure, then finger-tip turning of a knob lowers the desired object into the pressurized system to the desired depth. A magnet follower indicates the exact insertion depth on a scale. The rod which is inserted into the pressurized system is hollow and serves as a passage when gases are sampled or as a wire conduit for sensors or transducers. It is ideally suited for spot sampling of natural gas.

Applications

- ▶ Spot sampling of gases
- ▶ Analyzer protection against liquids
 - ▶ Portable
 - ▶ BTU, H₂S, Moisture, and others
- ▶ Insertion of:
 - ▶ Temperature sensors
 - ▶ Pressure sensors
 - ▶ Transducers
 - ▶ Other sensors

Benefits

- ▶ Aids in API 14.1 compliance
 - ▶ Insertion depth
 - ▶ Use of probe
 - ▶ Liquid rejection
- ▶ Improves personnel safety
- ▶ Inexpensive
- ▶ Easy to carry and install

Features

- ▶ Use as a sample probe with or without membrane
- ▶ Easy, quick, safe insertion and extraction from pressurized system.
- ▶ Rugged
- ▶ Simple to use
- ▶ Finger tip operation

Technical Specifications

Maximum allowable working pressure	2,000 psig
Maximum temperature (for higher temperatures contact factory)	225 °F (107 °C) without membrane 185 °F (85 °C) with membrane
Port size	Outlet: 1/4" female NPT (1/4" male NPT available)
Insertion depth (for greater insertion depths contact the factory)	L: 8" A: 11" (refer to L & A dimensions on back)
Installation valve requirement	1/2" NPT
Wetted materials	Machined parts: 316/316L stainless steel / NACE compliant All other metal parts: stainless steel / NACE compliant Dynamic o-ring: Kalrez (other materials available upon request) Static o-ring: Neoprene (other materials available upon request) Gasket seals: Teflon Anti-friction pad: Nylatron

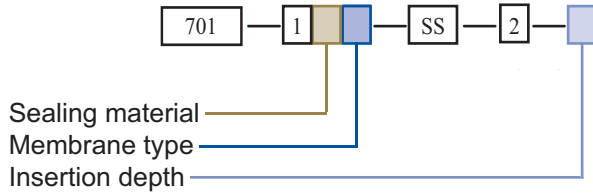


Model Numbering & Additional Part Numbers

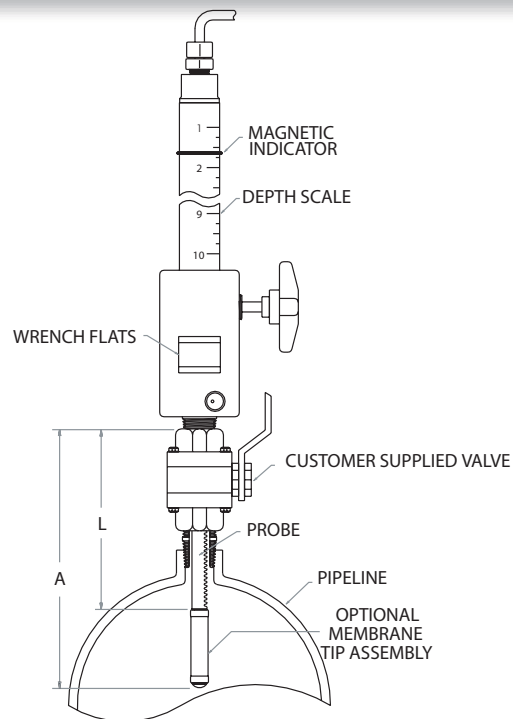
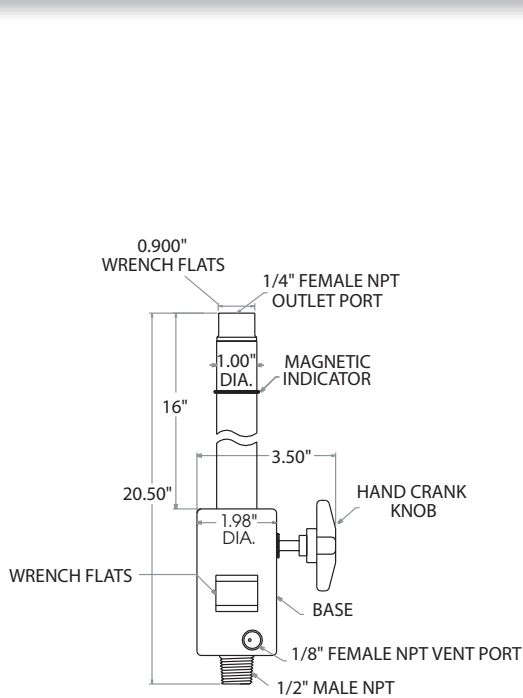
Your model number is determined by your specific needs. The following model numbers pertain to use in gas sampling applications. Choose options below.

Sealing material	7 = Neoprene	(other materials available upon request)		
Membrane type	0 = No membrane	5 = Type 5	6 = BTU	7 = Hi-flow backed
Insertion depth (L)	8 = Standard	(other insertion depths available upon request)		

How to build the Genie Portable Insertion Probe model number:



Dimensions



Local Distributor:

Manufacturer

A+ Corporation, LLC

41041 Black Bayou Rd.

Gonzales, LA 70737

Call for expert product application assistance:

Phone: (225)-644-5255 Website: www.geniefilters.com

Fax: (225)-644-3975 E-mail: sales@geniefilters.com

