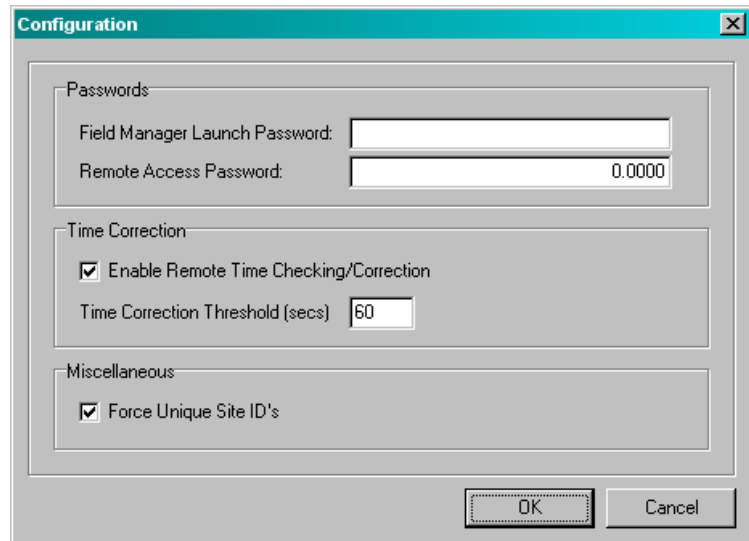
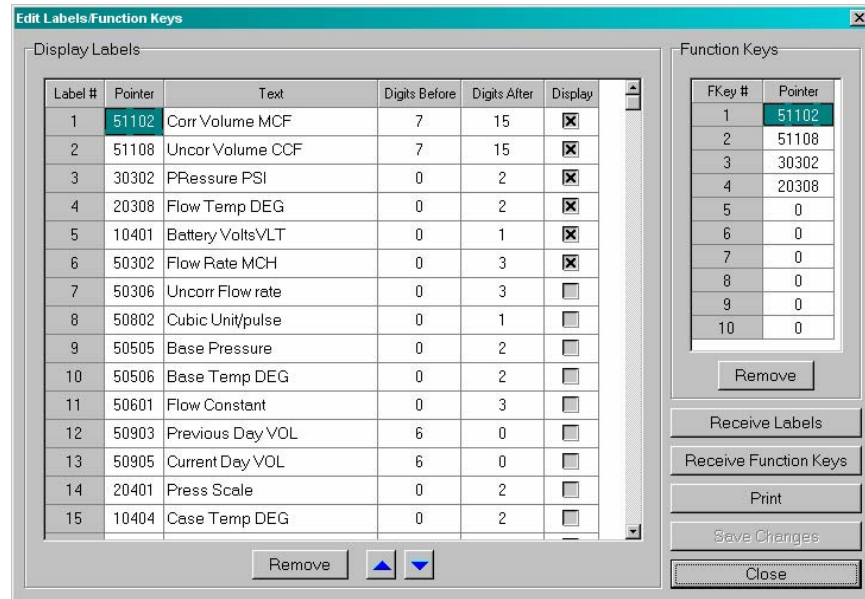




# Field Manager™ Software

A Windows® based Configuration Utility

The Edit Label Keys permits the user to assign Labels within the RTU for easy access. From this screen, the user can control what variables are visible when the external display is scrolled and in what order the variables are displayed. The assignment of Function Keys on the right side of the display permit one-key access from Virtual Keypad to frequently used variables such as Pressure, Flow Rate, Battery Voltage and others.



Where Security is an issue, FIELD MANAGER™ permits password protection to launch the software. A password to access the field remote is also included.

For customers who do not wish to assign unique Site ID's, FIELD MANAGER™ has the functionality to manage this function internally in order to protect from the inadvertent download of an incorrect database to a field remote.

Eagle Research FIELD MANAGER™ software product brings Windows® functionality into the field. Organized to duplicate typical field tasks and using Wizards to make using the products easier to set up and understand, thus minimizing training time and resources. FIELD MANAGER™ expedites deployment of Eagle Products into the field saving valuable time and resources. FIELD MANAGER™ is downloadable FREE OF CHARGE at [www.eagleresearchcorp.com](http://www.eagleresearchcorp.com) and may be deployed on as many desktop/laptop computers as necessary by the customer. CD versions are available for purchase.

For a demonstration of how FIELD MANAGER™ can help your company in simplifying the set up function of RTU's, Flow Computers, Volume Correctors, RtPM's and other Eagle products – call us at (304) 757-6565, or contact your local Sales Representative.



## EAGLE RESEARCH CORPORATION Software Information

# Field Manager™ Software

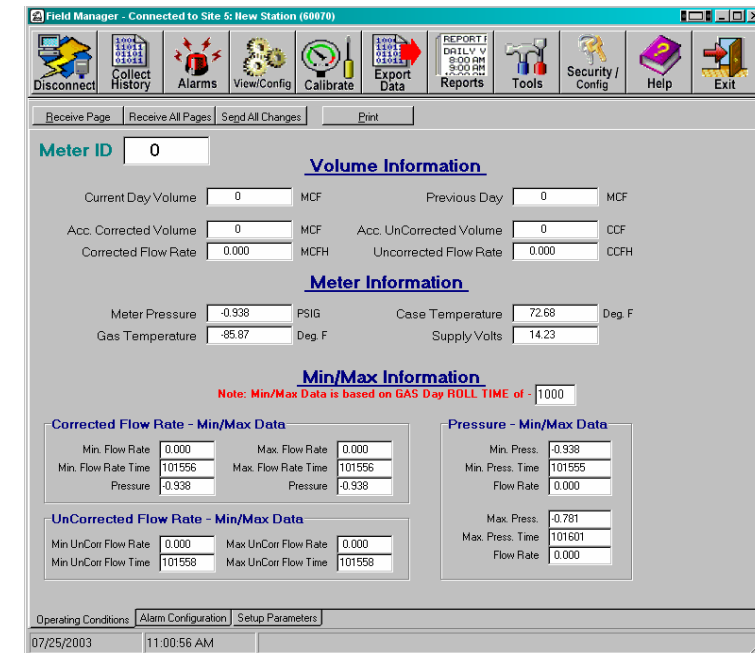
A Windows® based Configuration Utility



HMI interface features large easily readable buttons for primary activities related to the field device.



FIELD MANAGER™ is a Windows® based configuration utility for Eagle Research products. The software provides a straight-forward, easy to use group of functions to assist the user in setting up and configuring the field device, as well as gathering data, viewing alarms, calibrating transducers and features a variety of other useful tools. FIELD MANAGER™ is designed to run on Windows® 98, NT 4.0, 2000 or XP Operating system environment. Communication to the RTU is through an RS232 laptop cable. A library of configuration databases simplifies the identification of standard device types in the field. The software matches the field RTU to a device type automatically and displays the appropriate set up forms for the user.



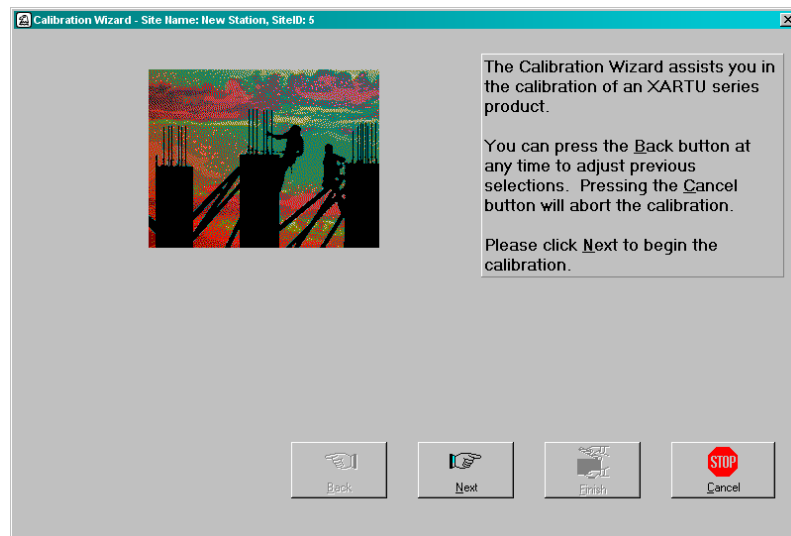
Information is grouped on tabbed screens to permit setup of the various measurement parameters.

Alarm set points, Min/Max, and other user definable selections such as AGA-3 and AGA-8 calculations, meter factors and other parameters are readily accessible to the user.



# Field Manager™ Software

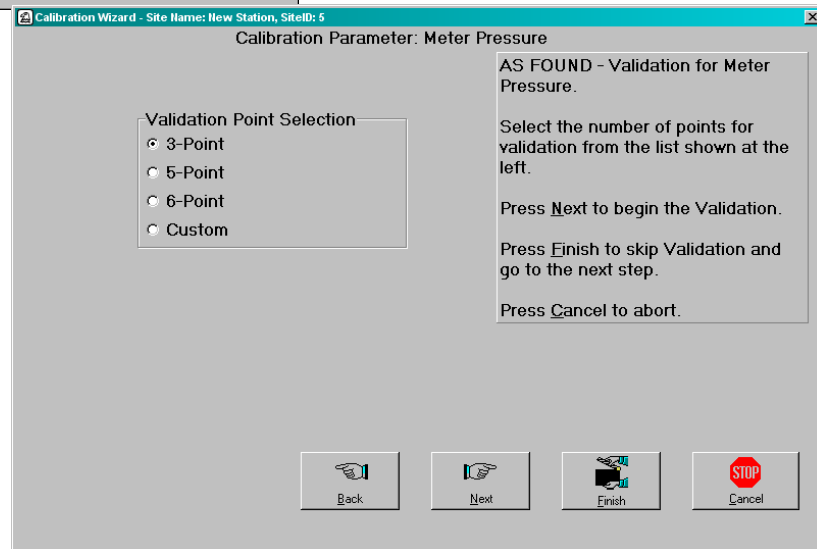
## A Windows® based Configuration Utility



Using a Wizard based philosophy, calibration of transducers in the field is simplified. When the Wizard starts, the software determines what transducers are in the unit automatically.

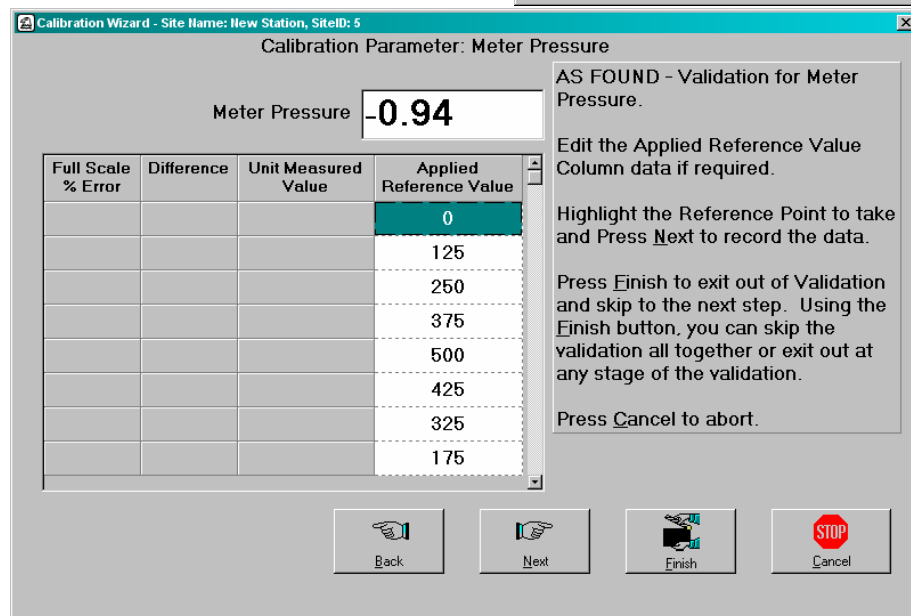
After the transducers are identified, the user is prompted for the number of points they want to calibrate.

The software suggests typical numbers of calibration points, or the user can define the number of points to calibrate on each transducer independently.



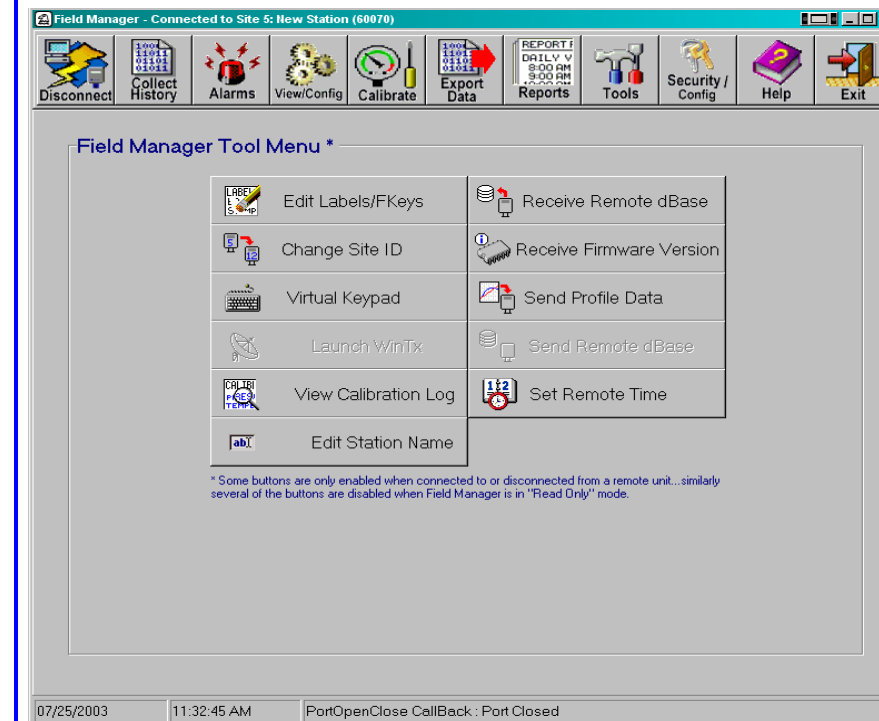
The ability to record and document AS FOUND, CALIBRATE and AS LEFT steps is included in the Wizard. The user is stepped through each step as it occurs and has the ability to go back and forth between steps as required.

All of the calibration step information is stored in a Calibration Log file that can be stored and/or printed as required by company policies and procedures.



# Field Manager™ Software

## A Windows® based Configuration Utility

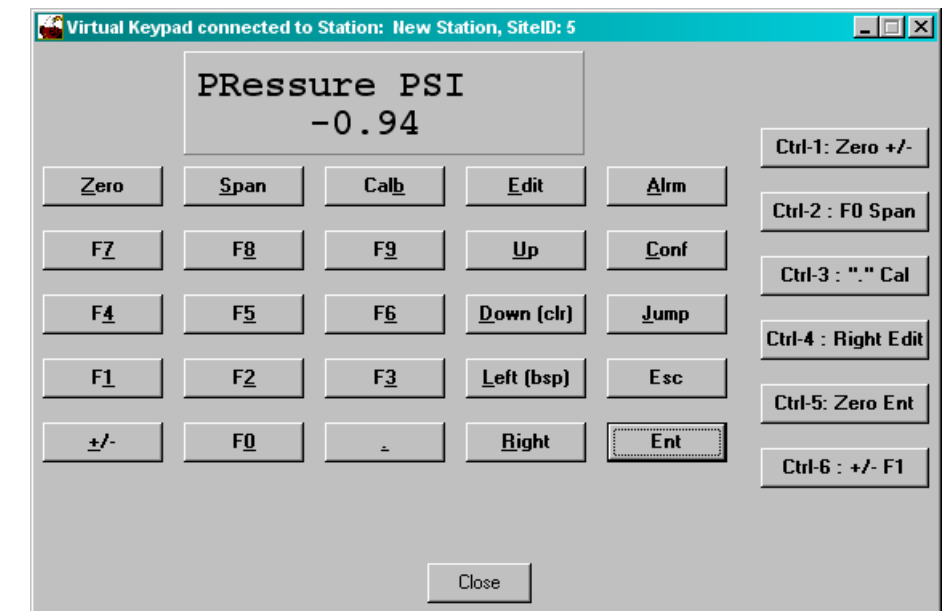


On the Tools Menu page at left are functions primarily related to the system database level of the field RTU. Functions found on this page include:

- Edit Labels/FKeys
- Change Site ID
- Virtual Keypad (shown below)
- Launch WinTX
- View Calibration Log
- Edit Station Name
- Receive Remote dBase
- Receive Firmware Version
- Send Profile Data
- Send Remote dBase
- Set Remote Time

These function keys give the user the ability to receive or reload the database, add/reload profile data for transducers, or view any element in the RTU database.

Virtual Keypad works just as if the user had a Handheld keypad plugged into the field device or RTU. From this window, items in the RTU database can be viewed and edited. The editing function can be password protected when necessary. E<sup>2</sup> settings such as baud rate and other parameters can be edited from this function. Calibration of the transducers can also be performed at this level.



As a side note, Virtual Keypad and Data Import/Export is also available for PDA's running the Palm® Operating System. See your Eagle Research representative for more details. Other Field Manager™ functionality is currently being ported to the Palm OS – watch our website for more details.

