



EAGLE RESEARCH CORPORATION

Product Information

MP Series

MPplus Volume Corrector and Pressure Monitor



The MPplus volume correctors and pressure monitors / recorders offer value and precision measurement in a compact package with Micro Power enhancements. These products were specifically designed direct from customer input to meet today's measurement needs. Cost effectiveness without performance sacrifice allows the MPplus to be deployed throughout your system from your largest industrial or pipeline load to your smallest commercial customers.

Product Highlights:

- **Outdoor Rated (NEMA 4X) Fiberglass Enclosure**
- **External Easy to Read LCD with Magnetic Scroll**
- **(1) or (2) Pressure Transducers (Gauge or Absolute)**
- **Optional Temperature Probe with 6ft cable**
- **Low Drag Mechanical Index with Gasket and Masking Kit**
- **Alkaline Battery Pack with (5) Year Battery Life**
- **1-Watt Solar Panel with 2.8AH Battery Back-up**
- **External Serial Port for Easy Computer Access**
- **AGA-7, AGA-5, NX-19, AGA-8 (Detailed & Gross Method 1 or 2) Compliant**
- **(2) Pulse Inputs for multiple meter inputs**
- **(1) Multi-purpose digital input**
- **(4) Form A or (2) Form C Pulse Outputs**
- **Eagle HEXASCII or MODBUS Protocol Support**
- **Programmable Wake-up and Sampling Intervals**
- **Battery Voltage and Ambient Temperature Sensors**
- **Support for External Comm. Options Available**
- **Software Controllable Status LED**
- **Class I Division 1 & 2 Approvals Pending**

MPplus Volume Corrector & Pressure Monitors

Product Information



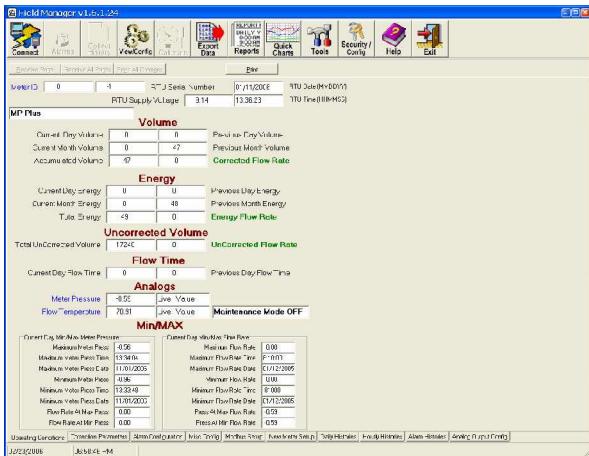
Pressure Recorders can be equipped with two pressure transducers for measurement of upstream and downstream pressures of regulator stations.

Pressure sample intervals are set from the factory to 1 minute but may be user programmed down to one second intervals.

Configurable historical log. Up to 11,000 records with 8-columns of history plus time stamp. Volumes may be calculated using live or user input "fixed" variables.



Single Board Design Offers Simplicity to the User.



Field Manager™ Software

Windows® based....
Customer driven.

FIELD MANAGER™ is a Windows® based configuration utility for Eagle Research products. The software provides a straight-forward, easy to use group of functions to assist the user in setting up and configuring the field device, as well as gathering data, viewing alarms, calibrating transducers and features a variety of other useful tools. **FIELD MANAGER™** is designed to run on Windows® 98, NT 4.0, 2000 or XP Operating system environment. Communication to the field device is through an RS232 laptop cable or telephone line. A library of configuration databases simplifies the identification of standard device types in the field. The software matches the field device to a device type automatically and displays the appropriate set up forms for the user.

Your Eagle Research Sales representative is available to answer any questions you may have regarding the Talon Family of products.