

Active X Interface

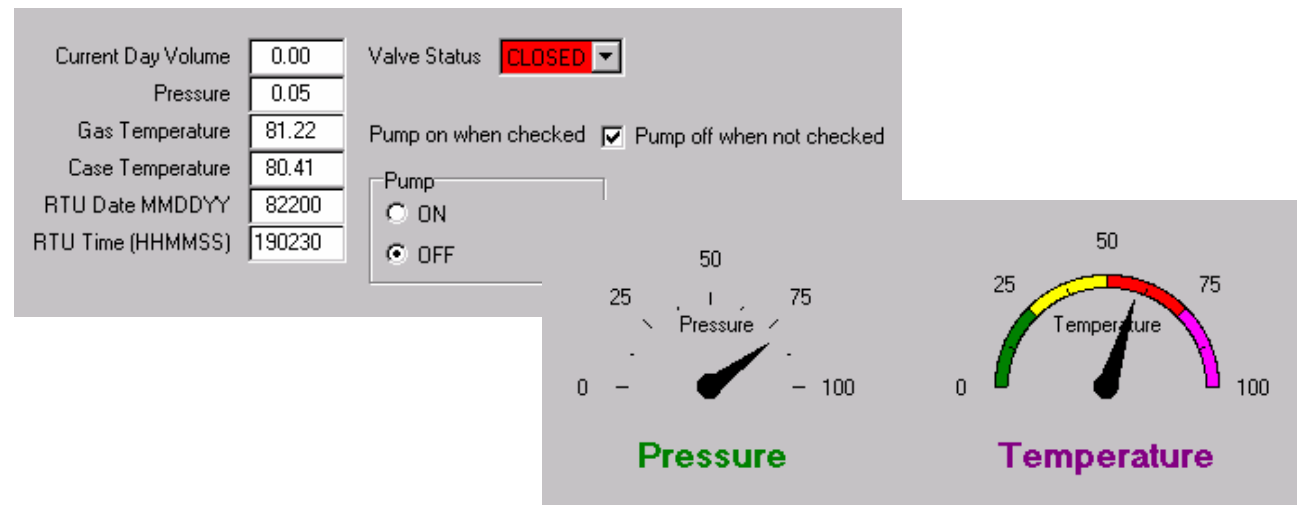
The Talon ActiveX Interface allows station data to be read directly into ActiveX compatible programs for custom processing or user definable screens such as operational data alarms, annunciation panels, or simple marketing tools such as nomination tracking.

| Run 1 | | | | Run 3 | | | | Run 5 | | | |
|-------|-----------------------|--------|--------|-------|-----------------------|--------|--------|-------|-----------------------|--------|--------|
| | | | Detail | | | | Detail | | | | Detail |
| N | Flow Rate | 90.00 | | N | Flow Rate | 90.00 | | N | Flow Rate | 90.00 | |
| N | Differential Pressure | 90.00 | | N | Differential Pressure | 75.00 | | N | Differential Pressure | 75.00 | |
| N | Pressure | 300.00 | | N | Pressure | 490.00 | | N | Pressure | 490.00 | |
| N | Temperature | 78.00 | | N | Temperature | 78.00 | | N | Temperature | 78.00 | |
| | Spare | | | | Spare | | | | Spare | | |
| | Spare | | | | Spare | | | | Spare | | |
| | Spare | | | | Spare | | | | Spare | | |
| | Spare | | | | Spare | | | | Spare | | |
| | Spare | | | | Spare | | | | Spare | | |
| | Spare | | | | Spare | | | | Spare | | |

| Run 2 | | | | Run 4 | | | | Spare | | | |
|-------|-----------------------|--------|---------|-------|-----------------------|--------|--------|-------|-----------------------|--|--|
| | | | Details | | | | Detail | | | | |
| N | Flow Rate | 90.00 | | N | Flow Rate | 90.00 | | | Flow Rate | | |
| N | Differential Pressure | 80.00 | | N | Differential Pressure | 75.00 | | | Differential Pressure | | |
| N | Pressure | 490.00 | | N | Pressure | 490.00 | | | Pressure | | |
| N | Temperature | 78.00 | | N | Temperature | 78.00 | | | Temperature | | |
| | Spare | | | | Spare | | | | Spare | | |
| | Spare | | | | Spare | | | | Spare | | |
| | Spare | | | | Spare | | | | Spare | | |
| | Spare | | | | Spare | | | | Spare | | |
| | Spare | | | | Spare | | | | Spare | | |
| | Spare | | | | Spare | | | | Spare | | |

Configurable Setup Forms, Configurable Graphical Interface

Edit Forms can be used to customize your device for any application. Each form can have multiple pages, which holds any data for a station. You can add different controls such as edit box, check box, combo box, radio group, label, and group box. The optional Process Graphics module lets you build a visual representation of your system. You can graphically represent data, display maps etc.



EAGLE RESEARCH CORPORATION Software Information

Talon™ Software Suite



- ◆ SCADA HMI, Data Management
- ◆ Device Manager
- ◆ Device Monitor
- ◆ Configuration Manager

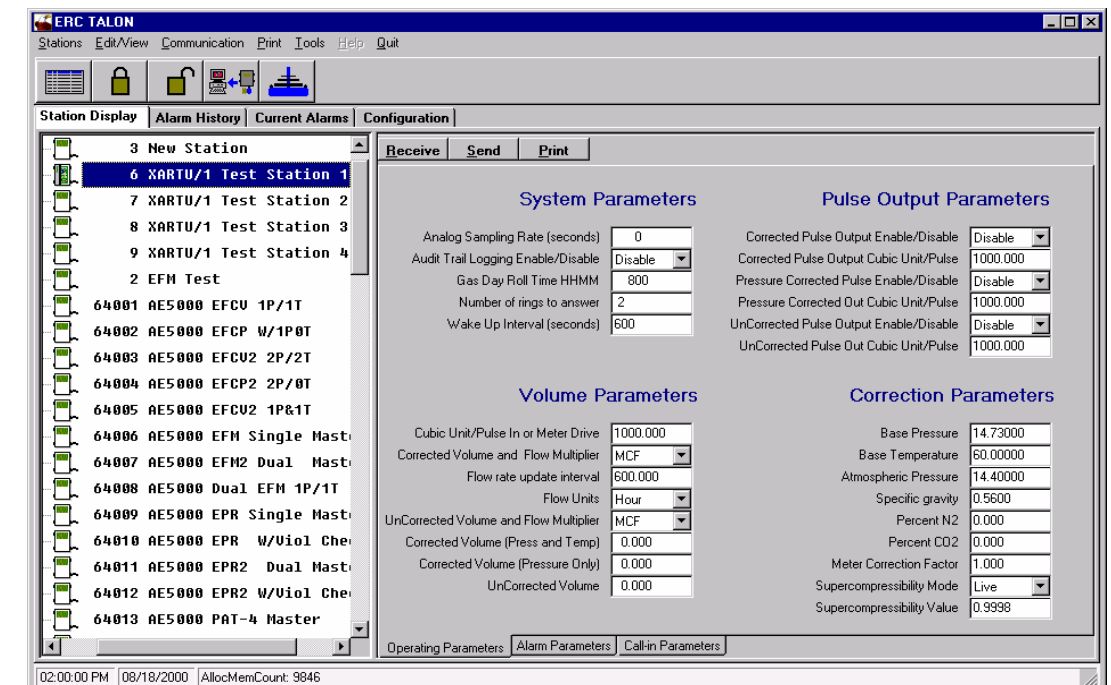
Major Features

- ◆ Store data for hundreds of Remote Terminal Units (RTU's)
- ◆ Poll simultaneously on four communications ports. Additional upgrades available for higher demand applications.
- ◆ Built-in Scheduler for automatic polling, reporting, and other tasks
- ◆ Expandable Report Generator, with the number of reports limited only by your imagination.
- ◆ Automatically answer the phone and process calls from RTU's with Alarm Conditions.
- ◆ Point Transfer – relay data from one RTU to another for complex control application over wide areas.
- ◆ Configure any Eagle Research Flow Computer or RTU.

Minimum System Requirements

- ◆ Microsoft Windows 98, NT 4.0, 2000 and XP
- ◆ Pentium Processor
- ◆ A hard disk with a minimum of 50 Megabytes available
- ◆ A CD-ROM disc drive
- ◆ SVGA (800 X 600) or higher screen resolution supported by Microsoft Windows.
- ◆ 64 MB of RAM for Windows 95 or 98 and 128 MB of RAM for Windows NT 4.0, 2000
- ◆ MS Bus Mouse or other suitable Pointing device
- ◆ 3.5" HD floppy drive
- ◆ Enhanced Keyboard
- ◆ One or more high-speed serial ports

Talon User Interface



4036 Teays Valley Road, P. O. Box 668, Scott Depot, WV 25560 Phone: (304) 757-6565 Fax: (304) 757-3332
 Web: <http://www.eagleresearchcorp.com>

Product Overview

Talon SCADA provides an enterprise-wide software platform to perform the functions now segregated into separate SCADA and electronic measurement systems. The software system provides application solutions for Natural Gas, Water/Waster Environmental Protection, Steam, and Electrical applications. Industrial/Commercial Measurement, Pressure/Temperature Monitoring, Supervisory Control, and Odorization are a few of the systems that utilize the software.

The Talon family of software gives you the ability to create a powerful system that meets your specific needs. Its flexible design provides the option to purchase only the modules you need, and the ability to expand your system with additional features by adding new modules in the future. Software modules can be provide for both central

Scheduler

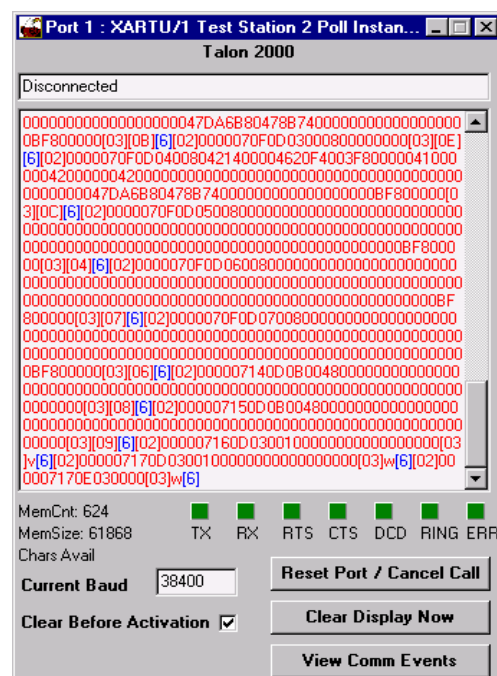
The Scheduler provides the means for managing chronological events such as automatic scheduling of polling, reporting, and other tasks. Additionally, the scheduler can deal with failed events with retries and timeouts as necessary.

| SiteID | Station Name | Poll # | Poll Name | Port # | Next Time | Last Time | Last Status |
|--------|------------------------|--------|---------------|--------|-----------------------|-----------------------|-------------|
| 6 | XARTU/1 Test Station 1 | 2 | Instantaneous | 2 | 08/21/2000 06:39:00PM | 08/21/2000 06:36:00PM | Other Error |
| 7 | XARTU/1 Test Station 2 | 2 | Instantaneous | 1 | 08/21/2000 06:39:30PM | 08/21/2000 06:36:30PM | No Response |

08/22/2000 05:53:01 PM Start Stop Pause Refresh List Continue Show Events Reset Cols Checking Registry for port activation 0

Data Ports

The Data Ports provide communications to field devices. They handle low level errors, such as communication faults and messaging retries. They provide information such as a status window for step-by-step communication events, an eavesdrop window for communication messages, and status LED's for TX, RX, RTS, CTS, DCD, RING, and ERR.

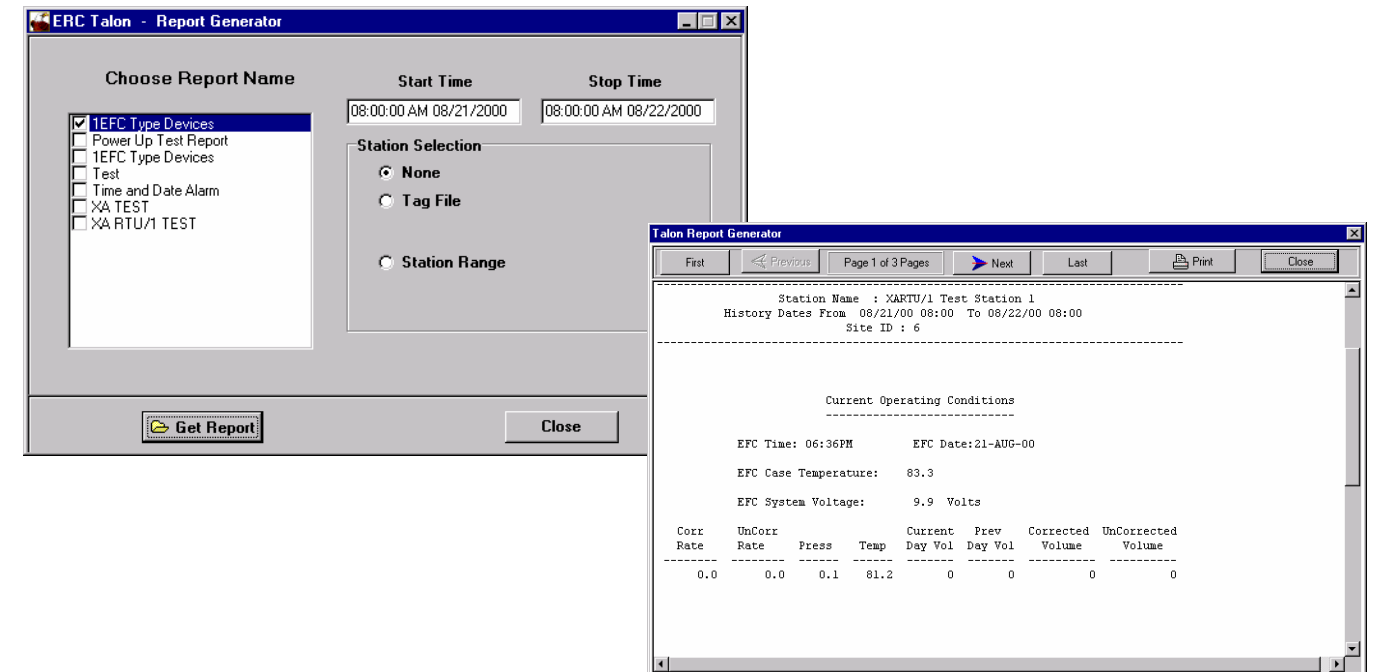


Data Port Events

| Date | Time | SiteID | StationName | Event |
|------------|-------------|--------|---------------------|--|
| 09/27/2000 | 11:08:40 AM | 0 | | CommWindow1.exe Application Started |
| 09/27/2000 | 11:08:42 AM | 0 | | Client Added to ClientList |
| 09/27/2000 | 11:15:03 AM | 0 | XARTU/1 1P/1T AGA-3 | CommWindow1.exe Exiting Application |
| 10/19/2000 | 01:22:12 PM | 0 | | CommWindow1.exe Application Started |
| 10/19/2000 | 01:22:13 PM | 0 | | Client Added to ClientList |
| 10/19/2000 | 01:22:24 PM | 1 | 42MR Single Drifice | Phone Dialout Attempt Failed: Call unavailable |
| 10/19/2000 | 01:23:06 PM | 1 | 42MR Single Drifice | Unexpected Closure of CommPort in TStation |
| 10/19/2000 | 01:23:21 PM | 0 | 42MR Single Drifice | CommWindow1.exe Exiting Application |
| 10/19/2000 | 01:24:23 PM | 0 | | CommWindow1.exe Application Started |
| 10/19/2000 | 01:24:23 PM | 0 | | Client Added to ClientList |
| 10/19/2000 | 01:24:59 PM | 0 | 42MR Single Drifice | CommWindow1.exe Exiting Application |
| 10/24/2000 | 06:46:45 PM | 0 | | CommWindow1.exe Application Started |
| 10/24/2000 | 06:46:47 PM | 0 | | CommWindow1.SetPort |
| 10/24/2000 | 06:46:47 PM | 0 | | Setting port values |
| 10/24/2000 | 06:46:47 PM | 0 | | Setting selected device |
| 10/24/2000 | 06:46:47 PM | 0 | | Setting form values |
| 10/24/2000 | 06:46:47 PM | 0 | | Setting auto answer |
| 10/24/2000 | 06:46:47 PM | 0 | | Setting current station |
| 10/24/2000 | 06:46:47 PM | 0 | | Exiting SetPort |

Report Generator

The Report Writer provides a variety of standard gas-usage flow reports. Users can modify and create reports for any specific application.



Calibration Wizard and Virtual Keypad

The Calibration Wizard can be used to calibrate field transmitters/transducers such as pressure and temperature. The Virtual Keypad function simulates the keypad and display in the field device. It may be used to perform any function, which is normally performed from the keypad of the field device.

