

# **Canalta**

## **Flow Measurement**

A Canalta Controls Company



## **CONTOUR™ K5 FLOW CONDITIONERS**

SELECT DIMENSIONAL DATA

**Call Us Toll Free: 1-855-CANALTA**

An ISO 9001:2008 registered company

Phone: 403.342.4494

Email: [sales@canaltaflow.com](mailto:sales@canaltaflow.com)

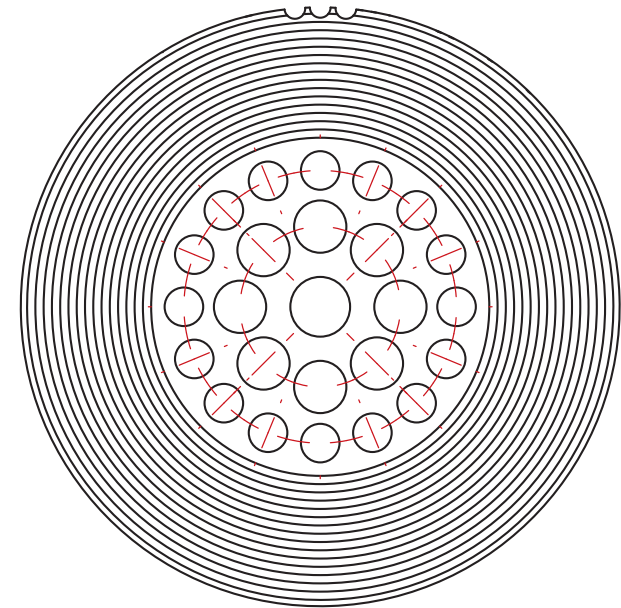
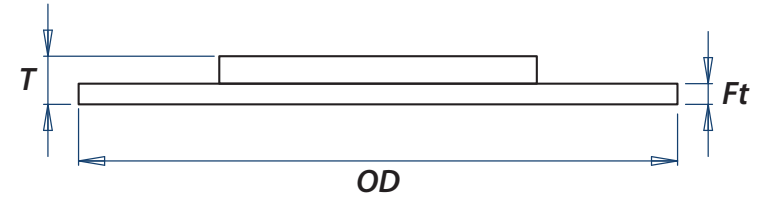
[www.canaltaflow.com](http://www.canaltaflow.com)



## FLANGED K5 UNITS

Line Size	Pipe Sched.	T FLOW COND. THICKNESS	Ft FLANGE THICKNESS	OD FLANGE DIAMETER
2	XXS	0.225	0.125	3.625
	160	0.253		
	80	0.291		
	40	0.310		
3	XXS	0.345	0.125	5.000
	160	0.394		
	80	0.435		
	40	0.460		
4	XXS	0.473	0.250	6.188
	160	0.516		
	80	0.574		
	40	0.604		
6	XXS	0.735	0.250	8.500
	160	0.778		
	80	0.864		
	40	0.910		
8	XXS	1.031	0.250	10.625
	160	1.022		
	80	1.144		
	40	1.197		
	30	1.211		
10	XXS	1.313	0.250	12.750
	160	1.275		
	80	1.434		
	40	1.503		
	30	1.520		

DIMENSIONS ARE IN INCHES

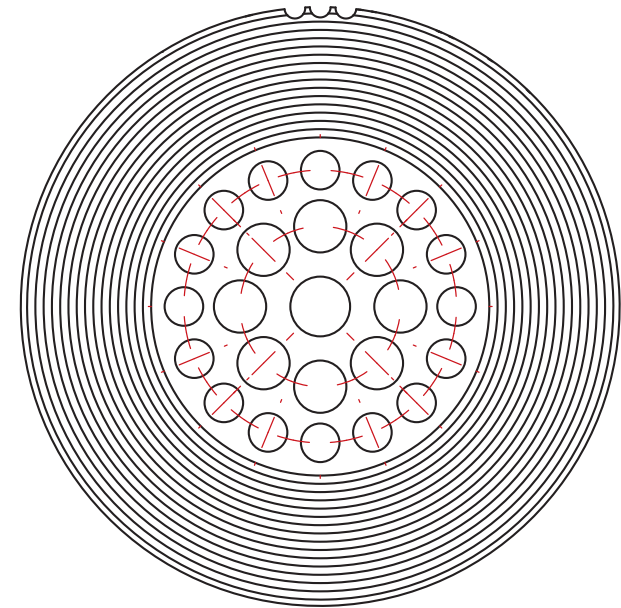
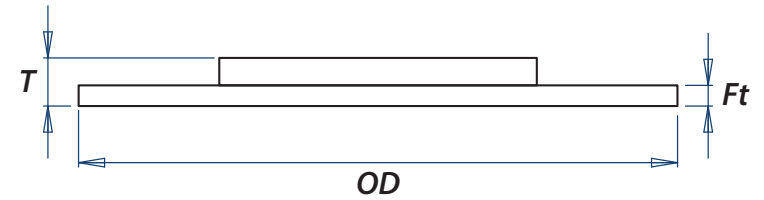




## FLANGED K5 UNITS

Line Size	Pipe Sched.	T FLOW COND. THICKNESS	Ft FLANGE THICKNESS	OD FLANGE DIAMETER
12	XXS	1.613	0.250	15.000
	160	1.519		
	80	1.706		
	40	1.791		
	30	1.814		
14	160	1.678	0.250	16.250
	80	1.875		
	40	1.969		
	30	1.988		
16	160	1.922	0.250	18.500
	80	2.147		
	40	2.250		
	30	2.288		
18	160	2.166	0.250	21.000
	80	2.419		
	40	2.531		
	30	2.569		
20	160	2.409	0.375	23.000
	80	2.691		
	40	2.822		
	30	2.850		
24	160	2.897	0.500	27.250
	80	3.234		
	40	3.394		
	30	3.431		

DIMENSIONS ARE IN INCHES

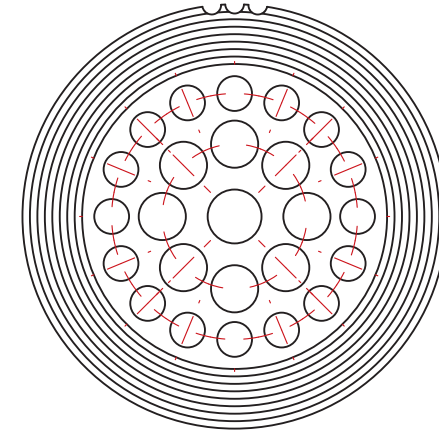
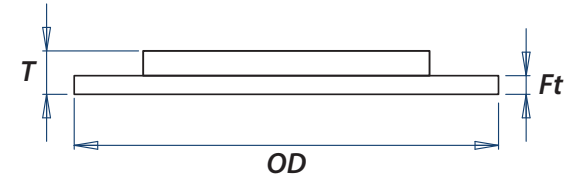




## IG-STYLE K5 UNITS

Line Size	Pipe Sched.	T FLOW COND. THICKNESS	Ft FLANGE THICKNESS	OD FLANGE DIAMETER
<b>ANSI 150 - 600</b>				
2	XXS	0.225	0.125	2.735
	160	0.253		
	80	0.291		
	40	0.310		
<b>ANSI 900 - 1500</b>				
2	XXS	0.225	0.125	2.305
	160	0.253		
	80	0.291		
	40	0.310		

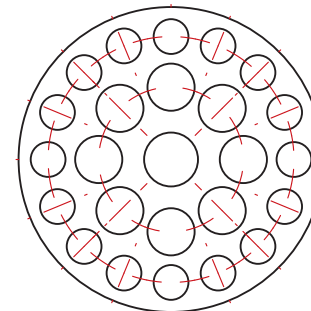
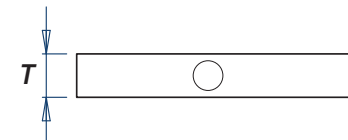
DIMENSIONS ARE IN INCHES



## PIN-STYLE K5 UNITS

Line Size	Pipe Sched.	T FLOW COND. THICKNESS
2	XXS	0.225
	160	0.253
	80	0.291
	40	0.310
3	XXS	0.345
	160	0.394
	80	0.435
	40	0.460
4	XXS	0.473
	160	0.516
	80	0.574
	40	0.604

DIMENSIONS ARE IN INCHES



# **Canalta**

**Flow Measurement**  
A Canalta Controls Company

---



<b>Corporate Head Office / Canada</b>	<b>(+1) 403 342 4494</b>
United States	(+1) 940 898 0800
Argentina	(+54) 9 11 3272 2377
United Kingdom	(+44) 0 1284 715089
India	(+91) 4254 265050

Find a list of our global distribution partners at [www.canaltaflow.com/global](http://www.canaltaflow.com/global)

The "Canalta Flow Measurement", "Canalta Controls" and "Contour" names and logos are trademarks of Canalta Controls Ltd. All other trademarks are the property of their respective companies. All information presented here is for information purposes only. Though every effort has been made to ensure their accuracy, the contents of this publication shall not be construed as warranties or guarantees, expressed or implied, regarding the products or services described herein, or their use or applicability. Due to Canalta's commitment to quality and innovation, all product designs, specifications and information material, including the contents of this publication, are subject to change without notice. Responsibility for the proper selection, maintenance and use of any product remains with the customer. SAFETY FIRST.

Copyright, trademark and other forms of proprietary rights protect the contents of this publication.

© 2015 Canalta Controls Ltd. All rights reserved. Unauthorized reproduction in whole or in part is prohibited.

---