

Sentinel

The Sentinel Thermoelectric Generator is certified for use in Class I, Div 2 hazardous locations and provides low-maintenance, trouble-free power for critical devices by providing at least 8W DC of continuous power.

KEY FEATURES:

- ✓ Hazardous Location Certified
- ✓ Automatic Fuel Safety Shut-Off
- ✓ Fuel Filter (H₂S)
- ✓ Pole or Wall Mountable
- ✓ Silent Operation
- ✓ Low Voltage Alarm
- ✓ Easy Installation
- ✓ Simple Startup
- ✓ Long Service Life
- ✓ Low Voltage Alarm Contact
- ✓ Tamper Proof Design
- ✓ Simple On-Site Maintenance



SPECIFICATIONS

HAZARDOUS LOCATION RATING

CERTIFICATION

Class I, Division 2, Group D, T3 -40°F to +120°F (-40°C to +49°C)

POWER SPECIFICATIONS

POWER RATING AT 68°F (20°C) AT SEA LEVEL

8 Watts, for annual maintenance

ELECTRICAL

OUTPUT ADJUSTMENT RANGE

12 Volt Model 12–15 VDC
24 Volt Model 24–29 VDC

Note: Output voltage is selected at time of ordering.

Terminal block accepts up to 12 AWG wire. Opening for 1/2" conduit in base of cabinet.

FUEL REQUIREMENTS

NATURAL GAS

168 scf/day (4.8m³/day)
1000 BTU/scf (37 MJ/Sm³) gas
max ~4 ppm (2.7 mg/m³) H₂S
max 16 ppm (11 mg/m³) H₂O
max 1% free O₂

Max. Supply Pressure: 25 psi (172.4 kPa)

Min. Supply Pressure: 5 psi (34 kPa)

Fuel Connection: 1/4" Female NPT

Note: Fuel requirements are specified at the inlet of the fuel filter.

ENVIRONMENTAL

AMBIENT OPERATING TEMPERATURE

Max. 120°F (+49°C)
Min. -40°F (-40°C)

OPERATING CONDITIONS

Unsheltered operation

Please contact GPT for operating conditions below -40°F or above 120°F or above 3,600ft elevation.

CONSTRUCTION

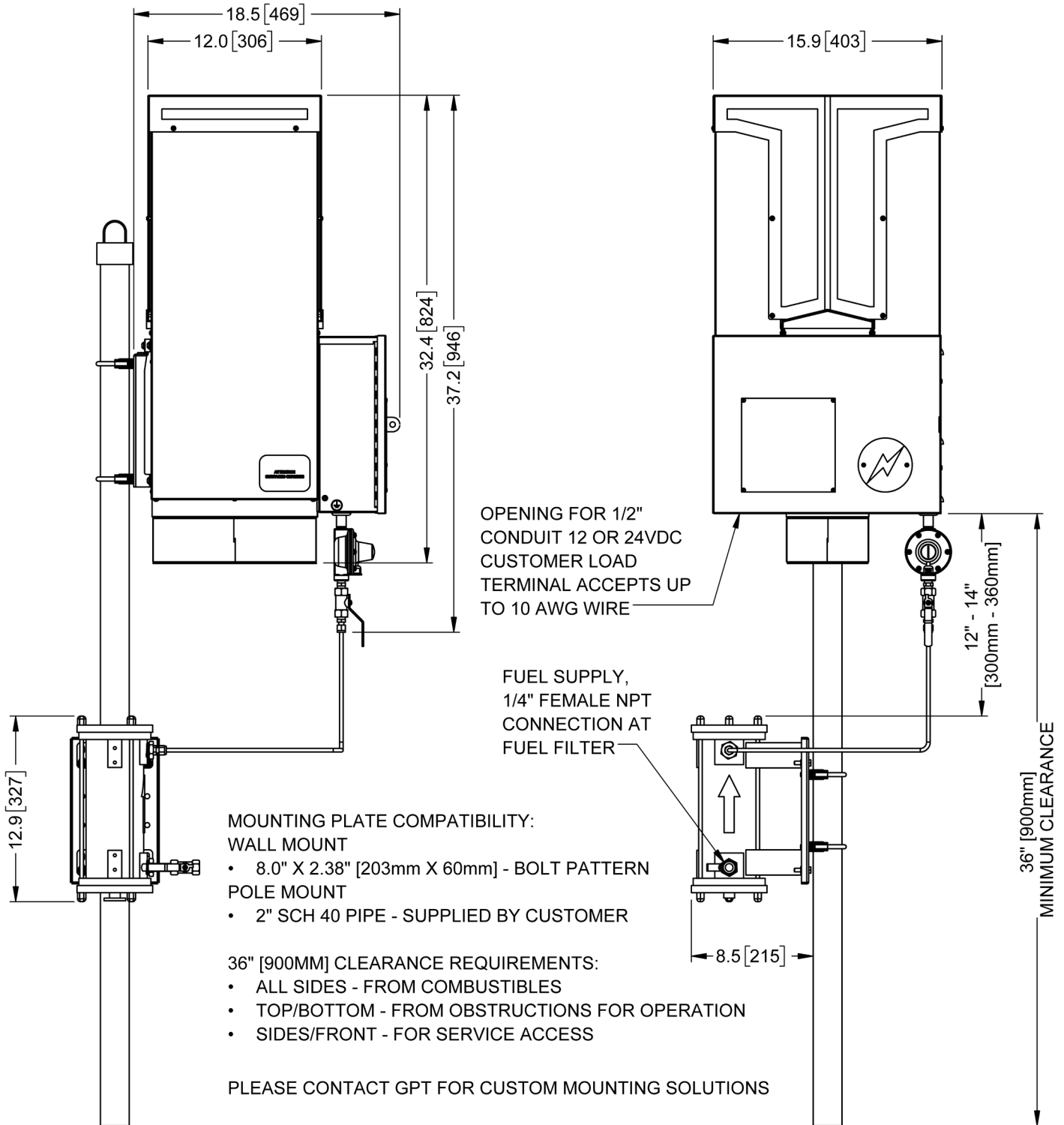
MATERIALS

Cabinet: 304 Stainless Steel (SS)
Cooling Type: Natural Convection
Fuel System: Brass, Aluminum & Stainless Steel

NOTE

Specifications shown are for standard sentinel configurations. Global Power Technologies (GPT) also offers customized products and systems to accommodate custom voltages, fuel supply systems and operating temperatures.

Specification data stated in this document is subject to change without notice. To verify these specifications are current, please contact your GPT sales representative.



NOTES:
Generator Weight: 93 lb [42.2 kg]

ISO
9001:2015
REGISTERED