

MODEL 1120

The Model 1120 Thermoelectric Generator is Class I, Div 2 or Class I, Div 1 hazardous area rated. With no moving parts it is a reliable, low maintenance source of DC electrical power for any application where regular utilities are unavailable or unreliable.

KEY FEATURES:

- ✓ Automatic Spark Ignition (SI)
- ✓ Automatic Fuel Shut-Off (SO)
- ✓ Fuel Filter
- ✓ Low Voltage Alarm Contacts (VSR)
- ✓ Volt & Amp Meter
- ✓ Reverse Current Protection
- ✓ Flame Arrestor
- ✓ CSA Certification (Class I, Div 2 Group D, Temp T3)

OPTIONAL FEATURES:

- ✓ FM Certification (Class I, Div 1, Temp T3)
- ✓ 316 SS Regulator & Fuel Valve
- ✓ Cathodic Protection Interface Panel
- ✓ Pole Mount or Bench Stand
- ✓ Intake Air Filter



SPECIFICATIONS

POWER SPECIFICATIONS

POWER RATING AT 20°C (68°F)

110 Watts @ 6.7 Volts 100 Watts @ 24 Volts
100 Watts @ 12 Volts

ELECTRICAL

OUTPUT ADJUSTMENT RANGE

6.7 Volts Up to 11 Volts
12 Volts 12–18 Volts
24 Volts 24–30 Volts
48 Volts 48–60 Volts

Output: Terminal block which accepts up to 00 AWG wire. Opening for two 3/4" NPT ports in base of electronics enclosure.

FUEL REQUIREMENTS

NATURAL GAS

8.8m³/day (311 Sft³/day)
1000 BTU/Sft³ (37.7 MJ/Sm³) gas
max 115 mg/Sm³ (~170 ppmw) H₂S
max 120 mg/Sm³ H₂O
max 1% free O₂

PROPANE

11.4 L/day (3.0 US gal/day)

NATURAL GAS/PROPANE

Max. Supply Pressure: 172 kPa (25 psi)
Min. Supply Pressure NG: 69 kPa (10 psi)
Min. Supply Pressure LPG: 103 kPa (15 psi)
Fuel Connection: 1/4" Male NPT

ENVIRONMENTAL

AMBIENT OPERATING TEMPERATURE

Max. +40°C (104°F)
Min. -20°C (-4°F)

OPERATING CONDITIONS

Unsheltered operation certified for use in hazardous areas.

Please contact GPT for operating conditions below -20°C or above +40°C.

CONSTRUCTION

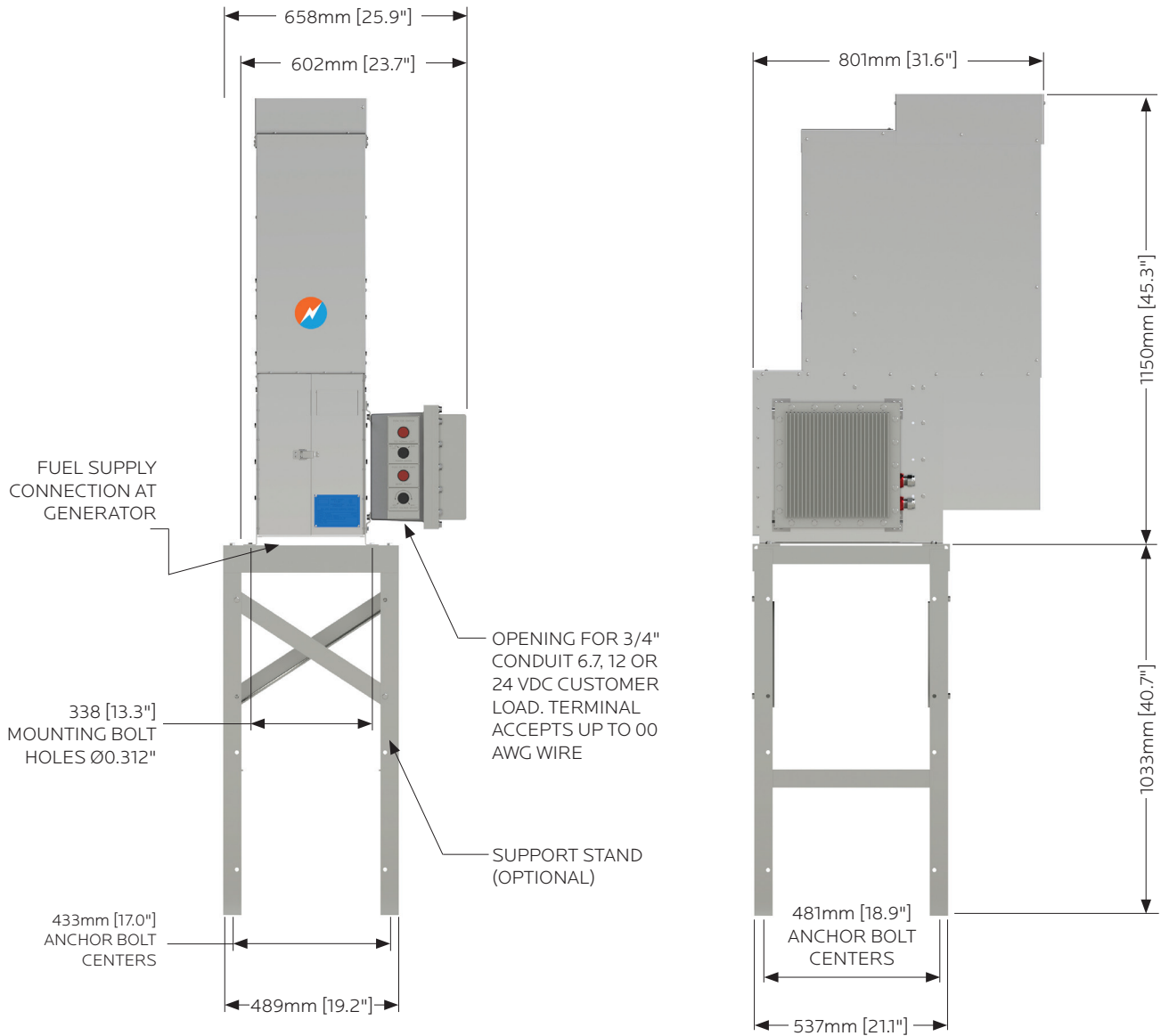
MATERIALS

Cabinet: 316 Stainless Steel (SS)
Cooling Type: Natural Convection
Fuel System: Aluminum & Stainless Steel

NOTES

Specifications shown are for standard 1120 configurations. Global Power Technologies (GPT) also offers customized products and systems to accommodate custom voltages, fuel supply systems and operating temperatures.

Specification data stated in this document is subject to change without notice. To verify these specifications are current, please contact your GPT sales representative.



NOTES:
Generator Weight: 130 kg [286 lb]

ISO
9001:2015
REGISTERED



MODEL 1500

The Model 1500 Thermoelectric Generator is Class 1, Div 2 hazardous area rated. With no moving parts, it is a reliable, low maintenance source of DC electrical power for any application where regular utilities are unavailable or unreliable.

KEY FEATURES:

- ✓ Automatic Spark Ignition (SI)
- ✓ Automatic Fuel Shut-Off (SO)
- ✓ Fuel Filter
- ✓ CSA Certification
- ✓ Reverse Current Protection
- ✓ Class I, Div 2, Group D, Temp T3
- ✓ Volt & Amp Meter
- ✓ Flame Arrestor



SPECIFICATIONS

POWER SPECIFICATIONS

POWER RATING AT 20°C (68°F)

500 Watts @ 24 Volts

ELECTRICAL

OUTPUT ADJUSTMENT RANGE

24 Volts 24–30 Volts

Output: Terminal block which accepts up to 00 AWG wire. Opening for two 3/4" conduit in base of cabinet.

FUEL REQUIREMENTS

NATURAL GAS

48.0m³/day (1695 Sft³/day)

1000 BTU/Sft³ (37.7 MJ/Sm³) gas

max 115 mg/Sm³ (~170 ppmw) H₂S

max 120 mg/Sm³ H₂O

max 1% free O₂

Max. Supply Pressure: 172 kPa (25 psi)

Min. Supply Pressure: 103 kPa (15 psi)

Fuel Connection: 1/4" Male NPT

ENVIRONMENTAL

AMBIENT OPERATING TEMPERATURE

Max. +45°C (115°F)

Min. -40°C (-40°F)

OPERATING CONDITIONS

Unsheltered operation

Please contact GPT for operating conditions below -40°C or above +45°C.

CONSTRUCTION

MATERIALS

Cabinet: 316 Stainless Steel (SS)

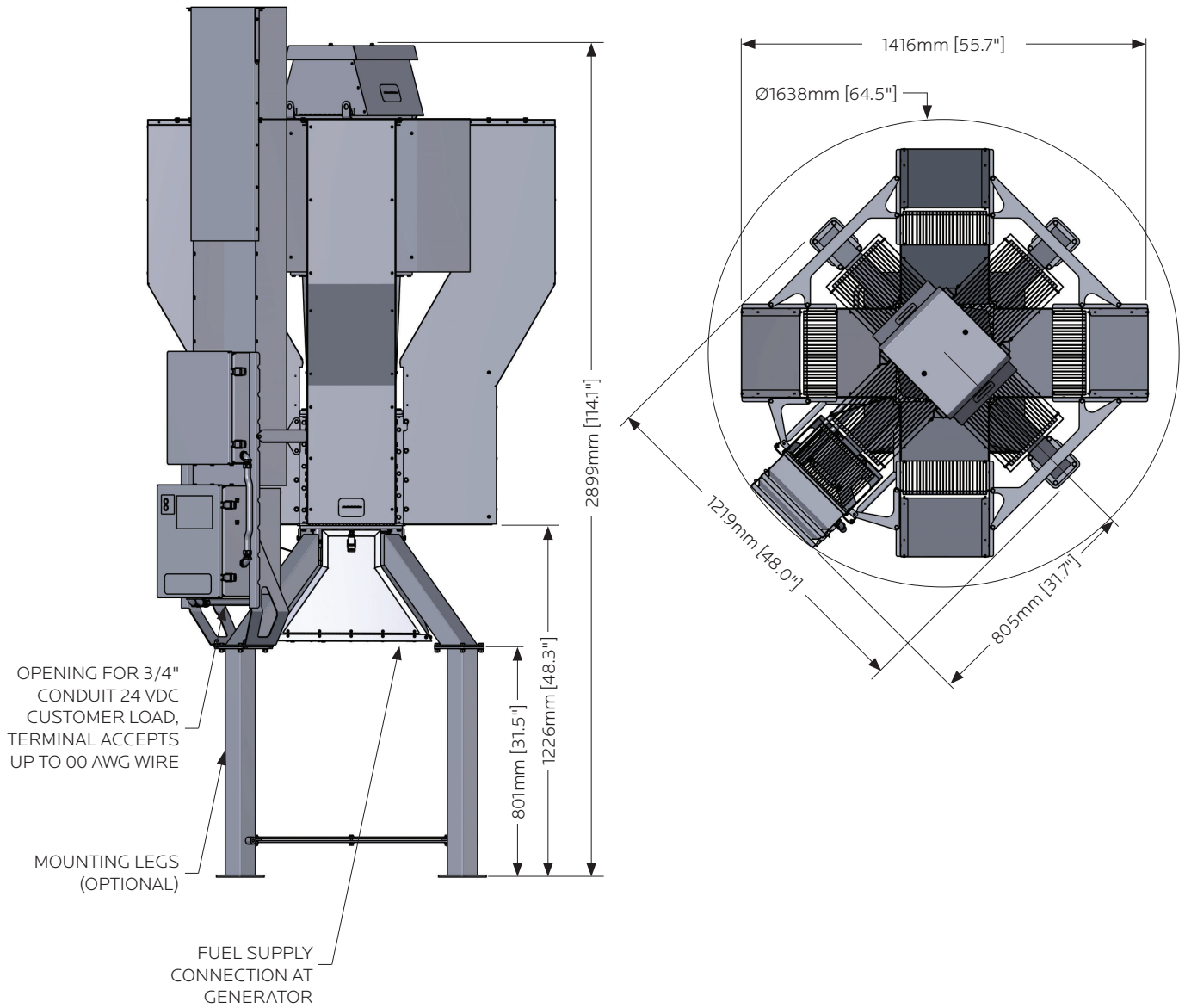
Cooling Type: Natural Convection

Fuel System: Aluminum & Stainless Steel

NOTES

Specifications shown are for standard 1500 configurations. Global Power Technologies (GPT) also offers customized products and systems to accommodate custom voltages, fuel supply systems and operating temperatures.

Specification data stated in this document is subject to change without notice. To verify these specifications are current, please contact your GPT sales representative.



NOTES:
Generator Weight: 700 kg [1530 lb]

ISO
9001:2015
REGISTERED 

MODEL 5030

The Model 5030 Thermoelectric Generator contains no moving parts. It is a reliable, low-maintenance source of DC electrical power for any application where regular utilities are unavailable or unreliable.

KEY FEATURES:

- ✦ Automatic Spark Ignition (SI)
- ✦ Automatic Fuel Shut-Off (SO)
- ✦ Fuel Filter
- ✦ Low Voltage Alarm Contacts (VSR)
- ✦ Reverse Current Protection

OPTIONAL FEATURES:

- ✦ Pole or Bench Stand
- ✦ Corrosive Environmental Fuel System



SPECIFICATIONS

POWER SPECIFICATIONS

POWER RATING AT 20°C (68°F)

21 Watts @ 12 Volts
21 Watts @ 24 Volts

ELECTRICAL

OUTPUT ADJUSTMENT RANGE

12 Volts 12–18 Volts
24 Volts 24–30 Volts

Output: Terminal block which accepts up to 10 AWG wire. Opening for 3/4" conduit in base of cabinet.

FUEL REQUIREMENTS

NATURAL GAS

2.1m³/day (74 Sft³/day)
1000 BTU/Sft³ (37.7 MJ/Sm³) gas
max 115 mg/Sm³ (~170 ppmw) H₂S
max 120 mg/Sm³ H₂O
max 1% free O₂

PROPANE

3.0 L/day (0.8 US gal/day)

NATURAL GAS/PROPANE

Max. Supply Pressure: 172 kPa (25 psi)
Min. Supply Pressure NG: 69 kPa (10 psi)
Min. Supply Pressure LPG: 103 kPa (15 psi)
Fuel Connection: 1/4" Male NPT

ENVIRONMENTAL

AMBIENT OPERATING TEMPERATURE

Max. +45°C (115°F)
Min. -40°C (-40°F)

OPERATING CONDITIONS

Unsheltered operation

Please contact GPT for operating conditions below -40°C or above +45°C.

CONSTRUCTION

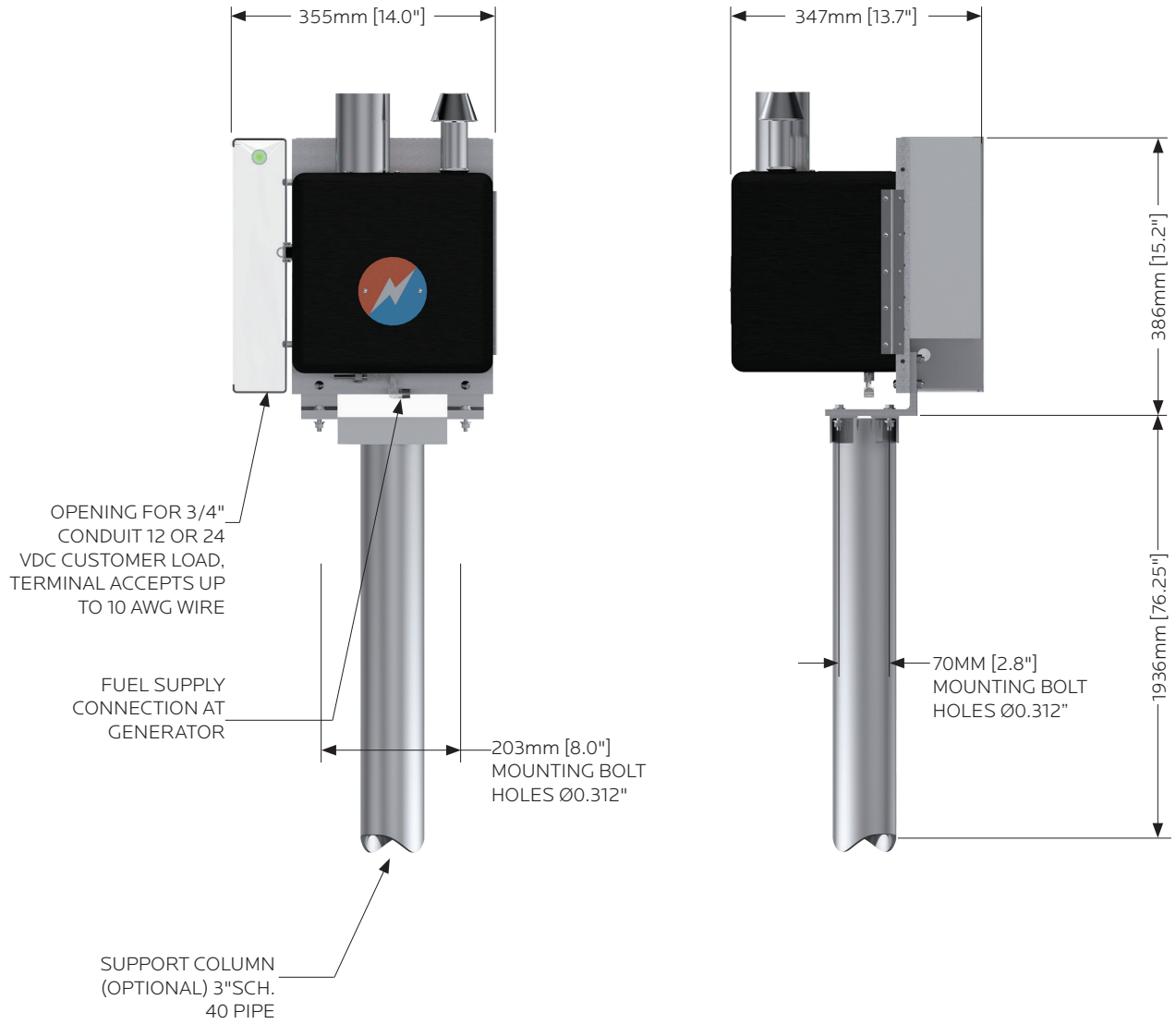
MATERIALS

Cabinet: Aluminum
Cooling Type: Natural Convection
Fuel System: Brass, Aluminum & Stainless Steel

NOTES

Specifications shown are for standard 5030 configurations. Global Power Technologies (GPT) also offers customized products and systems to accommodate custom voltages, fuel supply systems and operating temperatures.

Specification data stated in this document is subject to change without notice. To verify these specifications are current, please contact your GPT sales representative.



NOTES:
Generator Weight: 18 kg [40 lb]

ISO
9001:2015
REGISTERED

MODEL 5060

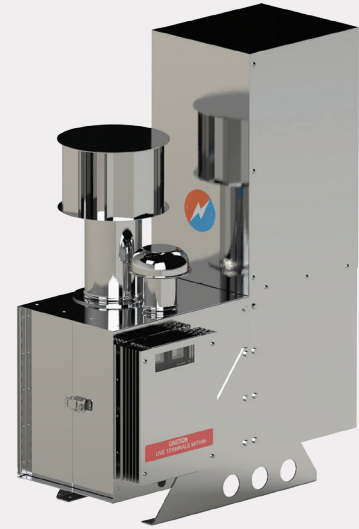
The Model 5060 Thermoelectric Generator contains no moving parts. It is a reliable, low-maintenance source of DC electrical power for applications where grid power is unavailable or unreliable.

KEY FEATURES:

- ✓ Automatic Spark Ignition (SI)
- ✓ Automatic Fuel Shut-Off (SO)
- ✓ Fuel Filter
- ✓ Low Voltage Alarm Contacts (VSR)
- ✓ Volt & Amp Meter (6.7V excluded)
- ✓ Reverse Current Protection

OPTIONAL FEATURES:

- ✓ Cathodic Protection Interface
- ✓ Pole or Bench Stand
- ✓ Corrosive Environmental Fuel System
- ✓ Flame Arrestor
- ✓ Remote Start



SPECIFICATIONS

POWER SPECIFICATIONS

POWER RATING AT 20°C (68°F)

60 Watts @ 6.7 Volts 54 Watts @ 24 Volts
54 Watts @ 12 Volts 54 Watts @ 48 Volts

ELECTRICAL

OUTPUT ADJUSTMENT RANGE

6.7 Volts up to 11 Volts
12 Volts 12–18 Volts
24 Volts 24–30 Volts
48 Volts 48–60 Volts

Output: Terminal block which accepts up to 8 AWG wire. Opening for 3/4" conduit in base of cabinet.

FUEL REQUIREMENTS

NATURAL GAS

4.4m³/day (155 Sft³/day)
1000 BTU/Sft³ (37.7 MJ/Sm³) gas
max 115 mg/Sm³ (~170 ppmw) H₂S
max 120 mg/Sm³ H₂O
max 1% free O₂

PROPANE

5.7 L/day (1.5 US gal/day)

NATURAL GAS/PROPANE

Max. Supply Pressure: 172 kPa (25 psi)
Min. Supply Pressure NG: 69 kPa (10 psi)
Min. Supply Pressure LPG: 103 kPa (15 psi)
Fuel Connection: 1/4" Male NPT

ENVIRONMENTAL

AMBIENT OPERATING TEMPERATURE

Max. +45°C (115°F)
Min. -40°C (-40°F)

OPERATING CONDITIONS

Unsheltered operation

Please contact GPT for operating conditions below -40°C or above +45°C.

CONSTRUCTION

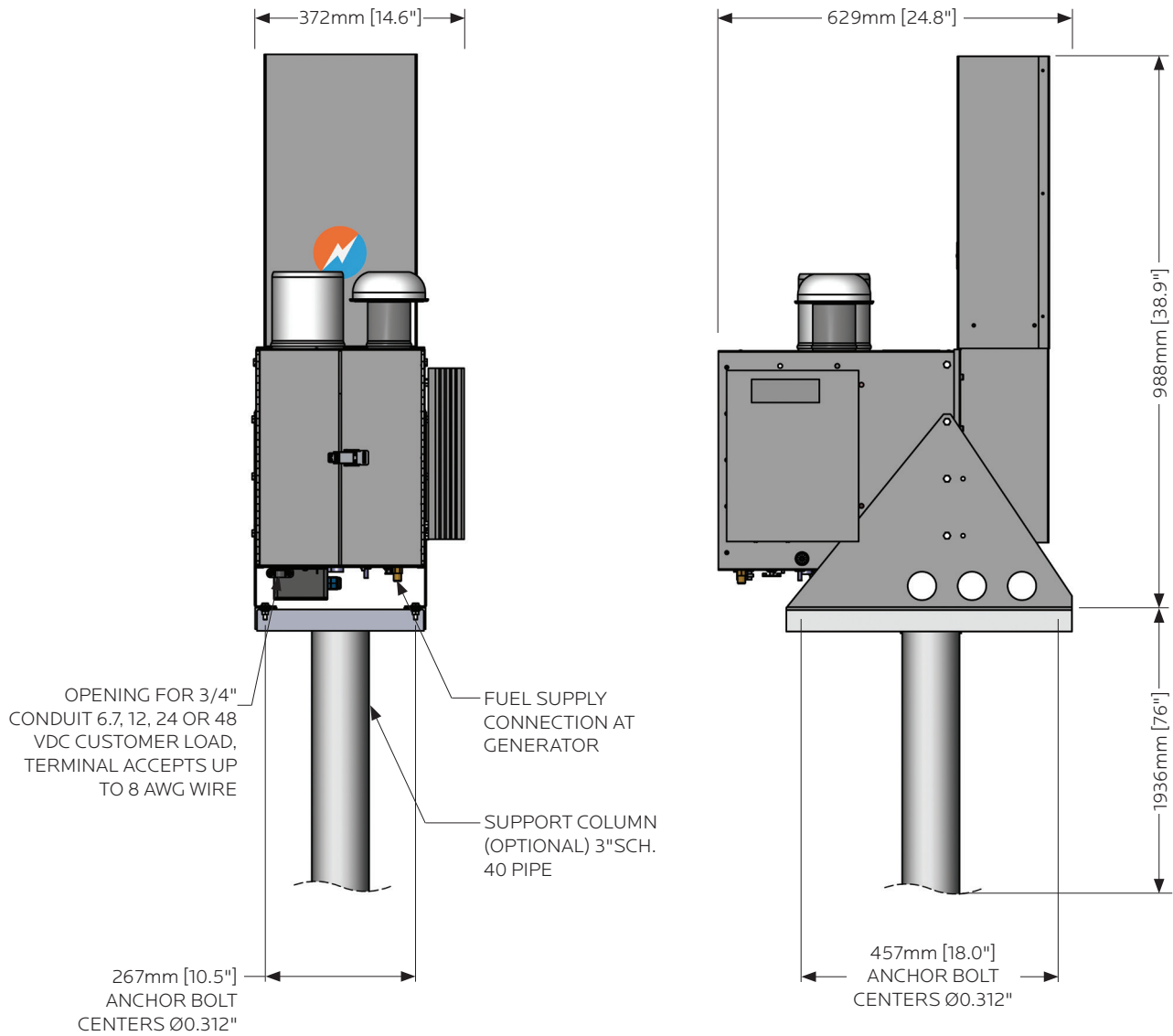
MATERIALS

Cabinet: 304 Stainless Steel (SS)
Cooling Type: Natural Convection
Fuel System: Brass, Aluminum & Stainless Steel

NOTES

Specifications shown are for standard 5060 configurations. Global Power Technologies (GPT) also offers customized products and systems to accommodate custom voltages, fuel supply systems and operating temperatures.

Specification data stated in this document is subject to change without notice. To verify these specifications are current, please contact your GPT sales representative.



NOTES:
Generator Weight: 41 kg [90 lb]

ISO
9001:2015
REGISTERED

MODEL 5120

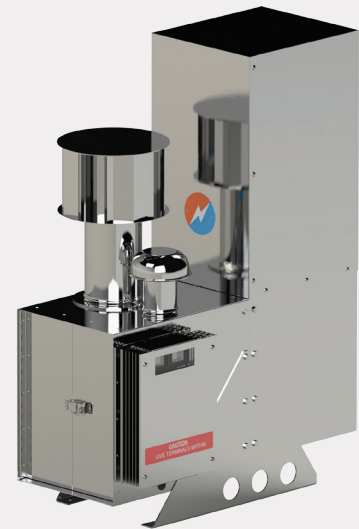
The Model 5120 Thermoelectric Generator contains no moving parts. It is a reliable, low-maintenance source of DC electrical power for any application where regular utilities are unavailable or unreliable.

KEY FEATURES:

- ✓ Automatic Spark Ignition (SI)
- ✓ Automatic Fuel Shut-Off (SO)
- ✓ Fuel Filter
- ✓ Low Voltage Alarm Contacts (VSR)
- ✓ Volt & Amp Meter (6.7V excluded)
- ✓ Reverse Current Protection

OPTIONAL FEATURES:

- ✓ Cathodic Protection Interface
- ✓ Pole or Bench Stand
- ✓ Corrosive Environmental Fuel System
- ✓ Flame Arrestor
- ✓ Marine Service
- ✓ Remote Start
- ✓ High BTU Gas Pack



SPECIFICATIONS

POWER SPECIFICATIONS

POWER RATING AT 20°C (68°F)

120 Watts @ 6.7 Volts	108 Watts @ 24 Volts
108 Watts @ 12 Volts	108 Watts @ 48 Volts

ELECTRICAL

OUTPUT ADJUSTMENT RANGE

6.7 Volts	up to 11 Volts
12 Volts	12–18 Volts
24 Volts	24–30 Volts
48 Volts	48–60 Volts

Output: Terminal block which accepts up to 8 AWG wire. Opening for 3/4" conduit in base of cabinet.

FUEL REQUIREMENTS

*High BTU Gas Pack

NATURAL GAS

8.8m³/day (311 Sft³/day)
1000 BTU/Sft³ (37.7 MJ/Sm³) gas
*1200–1500 BTU/Sft³
(45.2–56.5 MJ/Sm³) gas
max 115 mg/Sm³ (~170 ppmw) H₂S
max 120 mg/Sm³ H₂O
max 1% free O₂

PROPANE

11.4 L/day (3.0 US gal/day)

NATURAL GAS/PROPANE

Max. Supply Pressure: 172 kPa (25 psi)
Min. Supply Pressure NG: 69 kPa (10 psi)
Min. Supply Pressure LPG: 103 kPa (15 psi)
Fuel Connection: 1/4" Male NPT

ENVIRONMENTAL

AMBIENT OPERATING TEMPERATURE

Max. +45°C (115°F)
Min. -40°C (-40°F)

OPERATING CONDITIONS

Unsheltered operation

Please contact GPT for operating conditions below -40°C or above +45°C.

CONSTRUCTION

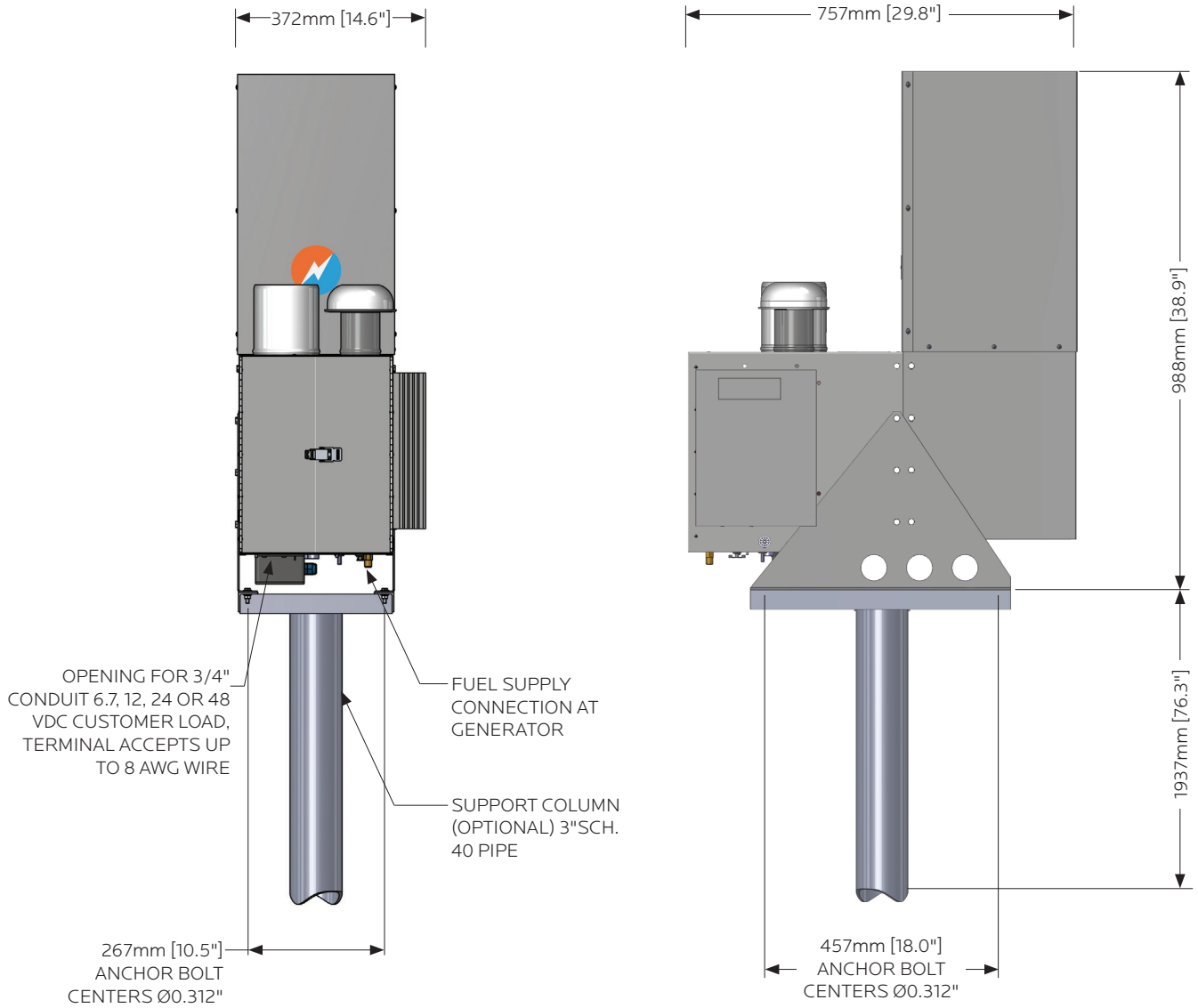
MATERIALS

Cabinet: 304 Stainless Steel (SS)
Cooling Type: Natural Convection
Fuel System: Brass, Aluminum & Stainless Steel

NOTES

Specifications shown are for standard 5120 configurations. Global Power Technologies (GPT) also offers customized products and systems to accommodate custom voltages, fuel supply systems and operating temperatures.

Specification data stated in this document is subject to change without notice. To verify these specifications are current, please contact your GPT sales representative.



NOTES:
Generator Weight: 60 kg [132 lb]

ISO
9001:2015
REGISTERED

MODEL 5220

The Model 5220 Thermoelectric Generator contains no moving parts. It is a reliable, low-maintenance source of DC electrical power for any application where regular utilities are unavailable or unreliable.

KEY FEATURES:

- ✓ Automatic Spark Ignition (SI)
- ✓ Automatic Fuel Shut-Off (SO)
- ✓ Fuel Filter
- ✓ Low Voltage Alarm Contacts (VSR)
- ✓ Volt & Amp Meter
- ✓ Reverse Current Protection

OPTIONAL FEATURES:

- ✓ Cathodic Protection Interface
- ✓ Remote Start
- ✓ Heat Recovery System (HRS)
- ✓ Pole or Bench Stand
- ✓ Corrosive Environmental Fuel System
- ✓ Marine Service
- ✓ Certification to CSA Std. T.I.L. R-10



SPECIFICATIONS

POWER SPECIFICATIONS

POWER RATING AT 20°C (68°F)

195 Watts @ 12 Volts
178 Watts @ 24 Volts

ELECTRICAL

OUTPUT ADJUSTMENT RANGE

12 Volts 12–18 Volts
24 Volts 24–30 Volts

Output: Terminal block which accepts up to 8 AWG wire. Opening for 3/4" conduit in base of cabinet.

FUEL REQUIREMENTS

NATURAL GAS

19.7m³/day (700 Sft³/day)
1000 BTU/Sft³ (37.7 MJ/Sm³) gas
max 115 mg/Sm³ (~170 ppmw) H₂S
max 120 mg/Sm³ H₂O
max 1% free O₂

PROPANE

28.0 L/day (7.4 US gal/day)

NATURAL GAS/PROPANE

Max. Supply Pressure: 345 kPa (50 psi)
Min. Supply Pressure: 165 kPa (24 psi)
Fuel Connection: 1/4" Female NPT

ENVIRONMENTAL

AMBIENT OPERATING TEMPERATURE

Max. +45°C (115°F)
Min. -40°C (-40°F)

OPERATING CONDITIONS

Unsheltered operation

Please contact GPT for operating conditions below -40°C or above +45°C.

CONSTRUCTION

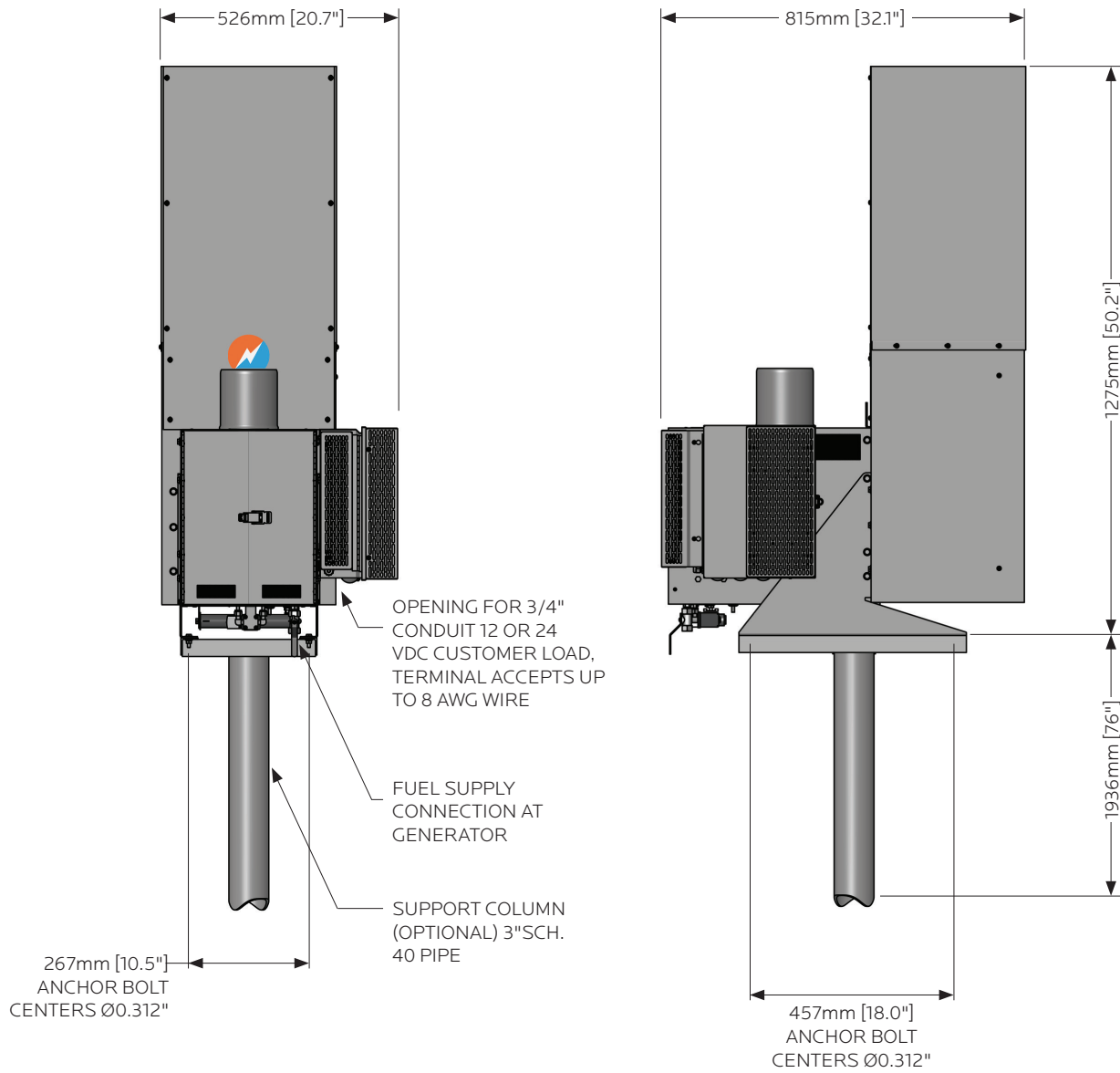
MATERIALS

Cabinet: 304 Stainless Steel (SS)
Cooling Type: Natural Convection
Fuel System: Brass, Aluminum & Stainless Steel

NOTES

Specifications shown are for standard 5220 configurations. Global Power Technologies (GPT) also offers customized products and systems to accommodate custom voltages, fuel supply systems and operating temperatures.

Specification data stated in this document is subject to change without notice. To verify these specifications are current, please contact your GPT sales representative.



NOTES:
Generator Weight: 100 kg [221 lb]

ISO
9001:2015
REGISTERED 

MODEL 8550

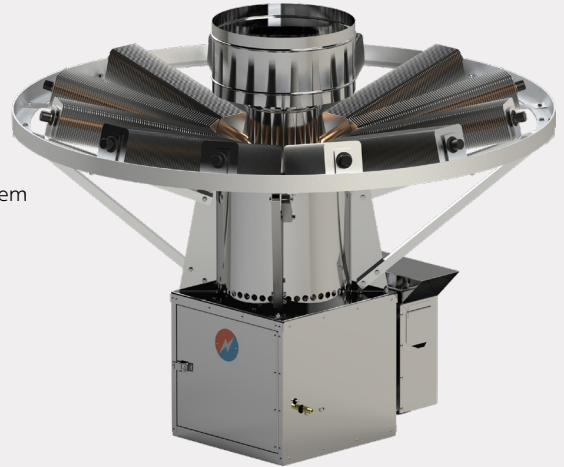
The Model 8550 Thermoelectric Generator contains no moving parts. It is a reliable, low-maintenance source of DC electrical power for any application where regular utilities are unavailable or unreliable.

KEY FEATURES:

- ✦ Automatic Spark Ignition (SI)
- ✦ Automatic Fuel Shut-Off (SO)
- ✦ Fuel Filter
- ✦ Low Voltage Alarm Contacts (VSR)
- ✦ Overtemperature Shutdown (SD)
- ✦ Reverse Current Protection

OPTIONAL FEATURES:

- ✦ Corrosive Environmental Fuel System
- ✦ Remote Start
- ✦ Bench Stand
- ✦ Operation Over 4,000m Elevation
- ✦ Cathodic Protection Interface
- ✦ Rain Cap*



SPECIFICATIONS

POWER SPECIFICATIONS

POWER RATING AT 20°C (68°F)

480 Watts @ 12 Volts 480 Watts @ 48 Volts
550 Watts @ 24 Volts

ELECTRICAL

OUTPUT ADJUSTMENT RANGE

12 Volts 11.4–12.6 Volts
24 Volts 24–30 Volts
48 Volts 47–57 Volts

Output: Terminal block which accepts up to 8 AWG wire. Opening for 3/4" conduit in base of cabinet.

FUEL REQUIREMENTS

NATURAL GAS

48.0m³/day (1695 Sft³/day)
1000 BTU/Sft³ (37.7 MJ/Sm³) gas
max 115 mg/Sm³ (~170 ppmw) H₂S
max 120 mg/Sm³ H₂O
max 1% free O₂

PROPANE

76.0 L/day (20.1 US gal/day)

NATURAL GAS/PROPANE

Max. Supply Pressure: 172 kPa (25 psi)
Min. Supply Pressure NG: 103 kPa (15 psi)
Min. Supply Pressure LPG: 138 kPa (20 psi)
Fuel Connection: 1/4" Male NPT

ENVIRONMENTAL

AMBIENT OPERATING TEMPERATURE

Max. +45°C (115°F)
Min. -40°C (-40°F)

OPERATING CONDITIONS

Unsheltered operation, shaded at >45°C

Please contact GPT for operating conditions below -40°C or above +45°C.

CONSTRUCTION

MATERIALS

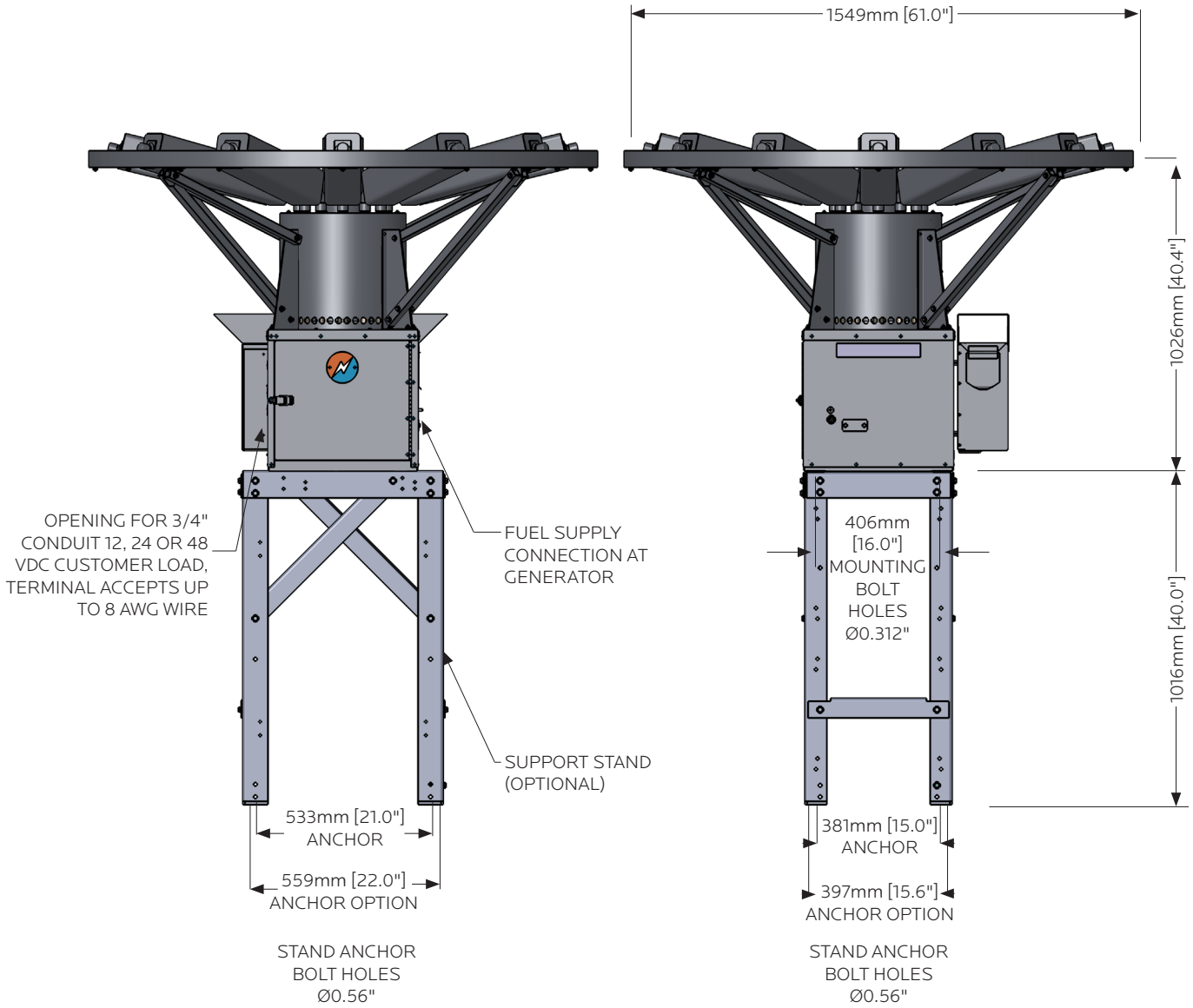
Cabinet: 304 Stainless Steel (SS)
Cooling Type: Natural Convection
Fuel System: Brass, Aluminum & Stainless Steel

NOTES

*Rain Cap included as standard with Remote Start Models.

Specifications shown are for standard 8550 configurations. Global Power Technologies (GPT) also offers customized products and systems to accommodate custom voltages, fuel supply systems and operating temperatures.

Specification data stated in this document is subject to change without notice. To verify these specifications are current, please contact your GPT sales representative.



NOTES:
Generator Weight: 102 kg [225 lb]

ISO
9001:2015
REGISTERED

MODEL P-5050

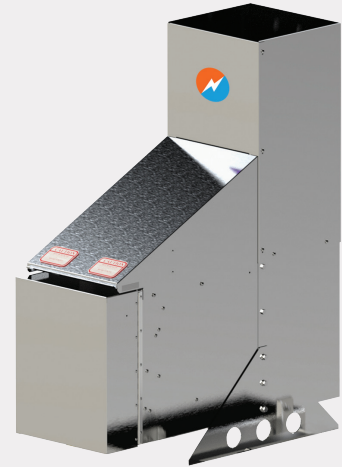
The Model P-5050 Thermoelectric Generator contains no moving parts. A reliable, low-maintenance source of DC power for any application where regular utilities are unavailable or unreliable.

KEY FEATURES:

- ✓ Automatic Spark Ignition (SI)
- ✓ Automatic Fuel Shut-Off (SO)
- ✓ Fuel Filter
- ✓ Low Voltage Alarm Contacts (VSR)
- ✓ Reverse Current Protection
- ✓ API 12N Flame Arrestor (Natural Gas Only)
- ✓ Certified to CSA Std. T.I.L. R-10; CE

OPTIONAL FEATURES:

- ✓ Remote Start
- ✓ Corrosive Environmental Fuel System
- ✓ Cathodic Protection Interface
- ✓ Converter Box
- ✓ Heat Recovery System (HRS)
- ✓ Pole Mount or Bench Stand



SPECIFICATIONS

POWER SPECIFICATIONS

POWER RATING AT 20°C (68°F)

50 Watts @ 14 Volts 50 Watts @ 27 Volts
40 Watts @ 54 Volts

ELECTRICAL

OUTPUT ADJUSTMENT RANGE

12 Volts 12–18 Volts
24 Volts 24–30 Volts
48 Volts 53–57 Volts

Note: 12/24 VDC Models: Terminal block accepts up to 8 AWG wire. Opening for 3/4" conduit in base of cabinet.
48 VDC: Terminal block accepts up to 4 AWG wire.

FUEL REQUIREMENTS

NATURAL GAS

4.8m³/day (168 Sft³/day)
1000 BTU/Sft³ (37.7 MJ/Sm³) gas
max 115 mg/Sm³ (~170 ppmw) H₂S
max 120 mg/Sm³ H₂O
max 1% free O₂

PROPANE

7.2 L/day (1.9 US gal/day)

NATURAL GAS/PROPANE

Max. Supply Pressure: 344 kPa (50 psi)
Min. Supply Pressure: 103 kPa (15 psi)
Fuel Connection: 1/4" Female NPT

ENVIRONMENTAL

AMBIENT OPERATING TEMPERATURE

Max. +55°C (130°F)
Min. -40°C (-40°F)

OPERATING CONDITIONS

Unsheltered operation, shaded at >45°C (113°F)

Please contact GPT for operating conditions below -40°C or above +55°C.

CONSTRUCTION

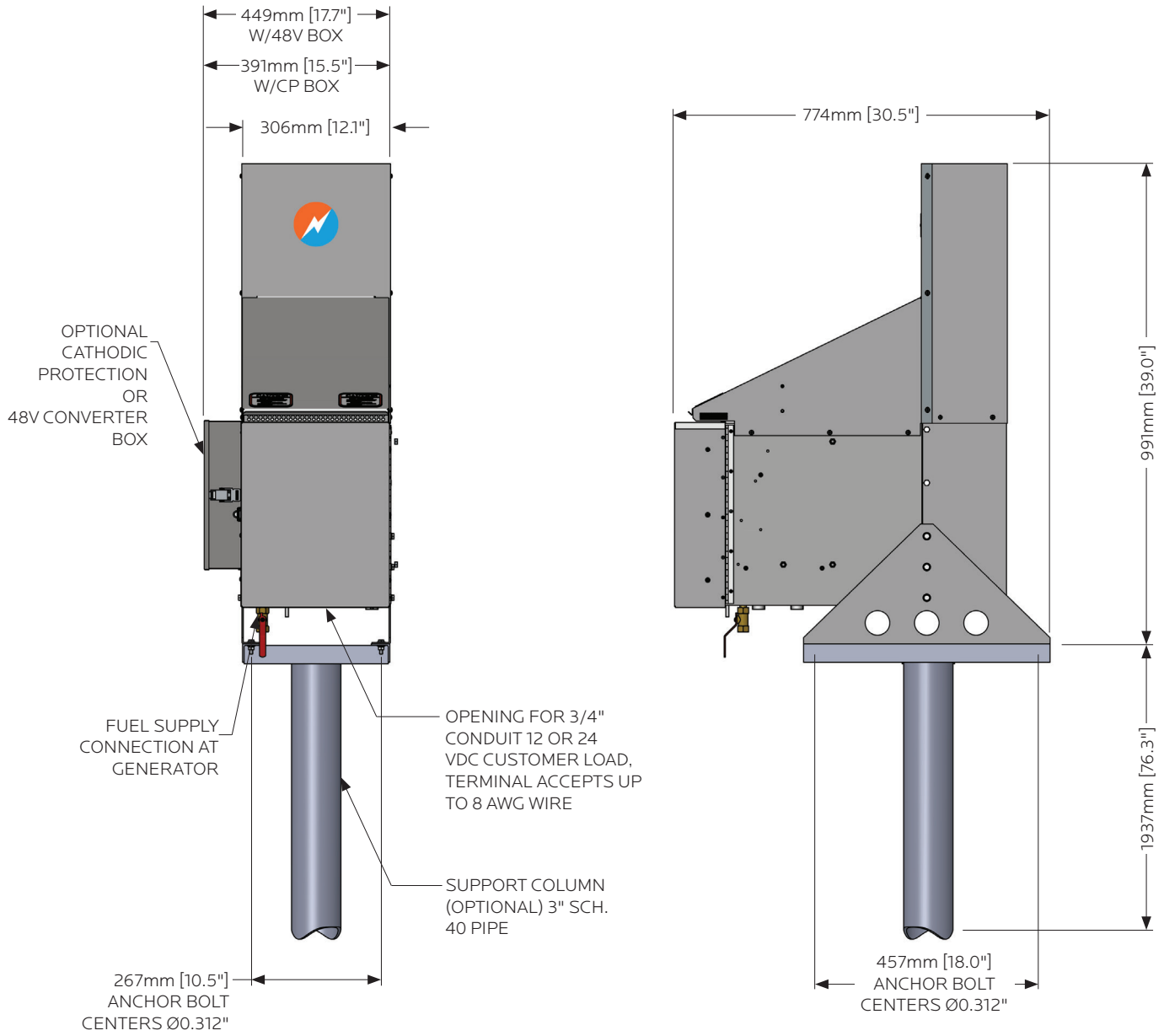
MATERIALS

Cabinet: 304 Stainless Steel (SS)
Cooling Type: Natural Convection
Fuel System: Brass, Aluminum & Stainless Steel

NOTES

Specifications shown are for standard P-5050 configurations. Global Power Technologies (GPT) also offers customized products and systems to accommodate custom voltages, fuel supply systems and operating temperatures.

Specification data stated in this document is subject to change without notice. To verify these specifications are current, please contact your GPT sales representative.



NOTES:

Generator Weight: 41 kg [90 lb]
 Certified to CSA Std. T.I.L. R-10; CE

ISO
 9001:2008
 REGISTERED



MODEL P-5100

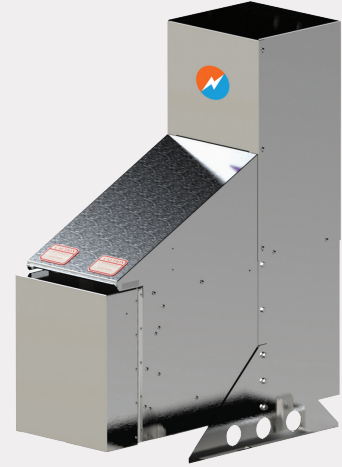
The Model P-5100 Thermoelectric Generator contains no moving parts. A reliable, low-maintenance source of DC power for any application where regular utilities are unavailable or unreliable.

KEY FEATURES:

- ✓ Automatic Spark Ignition (SI)
- ✓ Automatic Fuel Shut-Off (SO)
- ✓ Fuel Filter
- ✓ Low Voltage Alarm Contacts (VSR)
- ✓ Reverse Current Protection
- ✓ API 12N Flame Arrestor
- ✓ Certified to CSA Std. T.I.L. R-10; CE

OPTIONAL FEATURES:

- ✓ Remote Start
- ✓ Corrosive Environmental Fuel System
- ✓ Cathodic Protection Interface
- ✓ Converter Box
- ✓ Heat Recovery System (HRS)
- ✓ Pole Mount or Bench Stand



SPECIFICATIONS

POWER SPECIFICATIONS

POWER RATING AT 20°C (68°F)

100 Watts @ 14 Volts 100 Watts @ 27 Volts
80 Watts @ 54 Volts

ELECTRICAL

OUTPUT ADJUSTMENT RANGE

12 Volts 12–18 Volts
24 Volts 24–30 Volts
48 Volts 53–57 Volts

Note: 12/24 VDC Models: Terminal block accepts up to 8 AWG wire. Opening for 3/4" conduit in base of cabinet.
48 VDC: Terminal block accepts up to 4 AWG wire.

FUEL REQUIREMENTS

*Gas factory options

NATURAL GAS

9.4m³/day (332 Sft³/day)
1000 BTU/Sft³ (37.7 MJ/Sm³) gas
*1200–1500 BTU/Sft³
(45.2–56.5) MJ/Sm³) gas
max 115 mg/Sm³ (~170 ppmw) H₂S
max 120 mg/Sm³ H₂O
max 1% free O₂

PROPANE

13.8 L/day (3.6 US gal/day)

NATURAL GAS/PROPANE

Max. Supply Pressure: 344 kPa (50 psi)
Min. Supply Pressure: 103 kPa (15 psi)
Fuel Connection: 1/4" Female NPT

ENVIRONMENTAL

AMBIENT OPERATING TEMPERATURE

Max. +55°C (130°F)
Min. -40°C (-40°F)

OPERATING CONDITIONS

Unsheltered operation, shaded at >45°C (113°F)

Please contact GPT for operating conditions below -40°C or above +55°C.

CONSTRUCTION

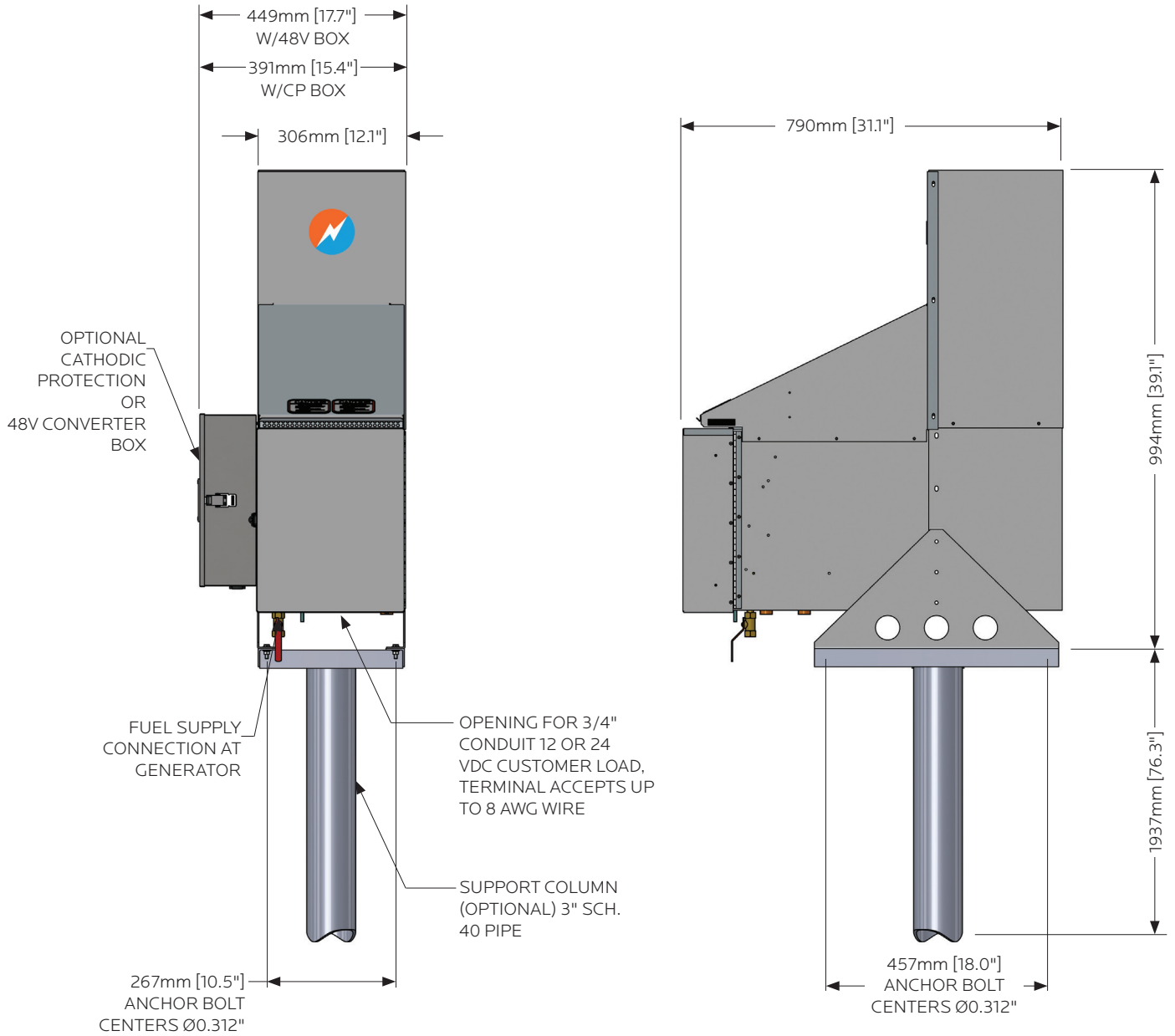
MATERIALS

Cabinet: 304 Stainless Steel (SS)
Cooling Type: Natural Convection
Fuel System: Brass, Aluminum & Stainless Steel

NOTES

Specifications shown are for standard P-5100 configurations. Global Power Technologies (GPT) also offers customized products and systems to accommodate custom voltages, fuel supply systems and operating temperatures.

Specification data stated in this document is subject to change without notice. To verify these specifications are current, please contact your GPT sales representative.



NOTES:

Generator Weight: 60 kg [132 lb]
Certified to CSA Std. T.I.L. R-10; CE

ISO
9001:2008
REGISTERED



MODEL S-8500

The Model S-8500 Thermoelectric Generator contains no moving parts. It is a reliable, low-maintenance source of DC electrical power for any application where regular utilities are unavailable or unreliable.

KEY FEATURES:

- ✓ Automatic Spark Ignition (SI)
- ✓ Automatic Fuel Shut-Off (SO)
- ✓ Fuel Filter
- ✓ Low Voltage Alarm Contacts (VSR)
- ✓ Reverse Current Protection
- ✓ Certified to CSA Std. T.I.L. R-10; CE

OPTIONAL FEATURES:

- ✓ Remote Start
- ✓ Corrosive Environmental Fuel System
- ✓ Cathodic Protection Interface



SPECIFICATIONS

POWER SPECIFICATIONS

POWER RATING AT 20°C (68°F)

460 Watts @ 12 Volts 460 Watts @ 48 Volts
520 Watts @ 24 Volts

ELECTRICAL

OUTPUT ADJUSTMENT RANGE

12 Volts 11.4–12.6 Volts
24 Volts 24–30 Volts
48 Volts 47–57 Volts

Output: Terminal block which accepts up to 8 AWG wire. Opening for 1" conduit in base of cabinet.

FUEL REQUIREMENTS

NATURAL GAS

50.4m³/day (1780 Sft³/day)
1000 BTU/Sft³ (37.7 MJ/Sm³) gas
max 115 mg/Sm³ (~170 ppmw) H₂S
max 120 mg/Sm³ H₂O
max 1% free O₂

PROPANE

76.0 L/day (20.1 US gal/day)

NATURAL GAS/PROPANE

Max. Supply Pressure: 344 kPa (50 psi)
Min. Supply Pressure NG: 103 kPa (15 psi)
Min. Supply Pressure LPG: 166 kPa (24 psi)
Fuel Connection: 1/4" Female NPT

ENVIRONMENTAL

AMBIENT OPERATING TEMPERATURE

Max. +55°C (130°F)
Min. -40°C (-40°F)

OPERATING CONDITIONS

Unsheltered operation

Please contact GPT for operating conditions below -40°C or above +55°C.

CONSTRUCTION

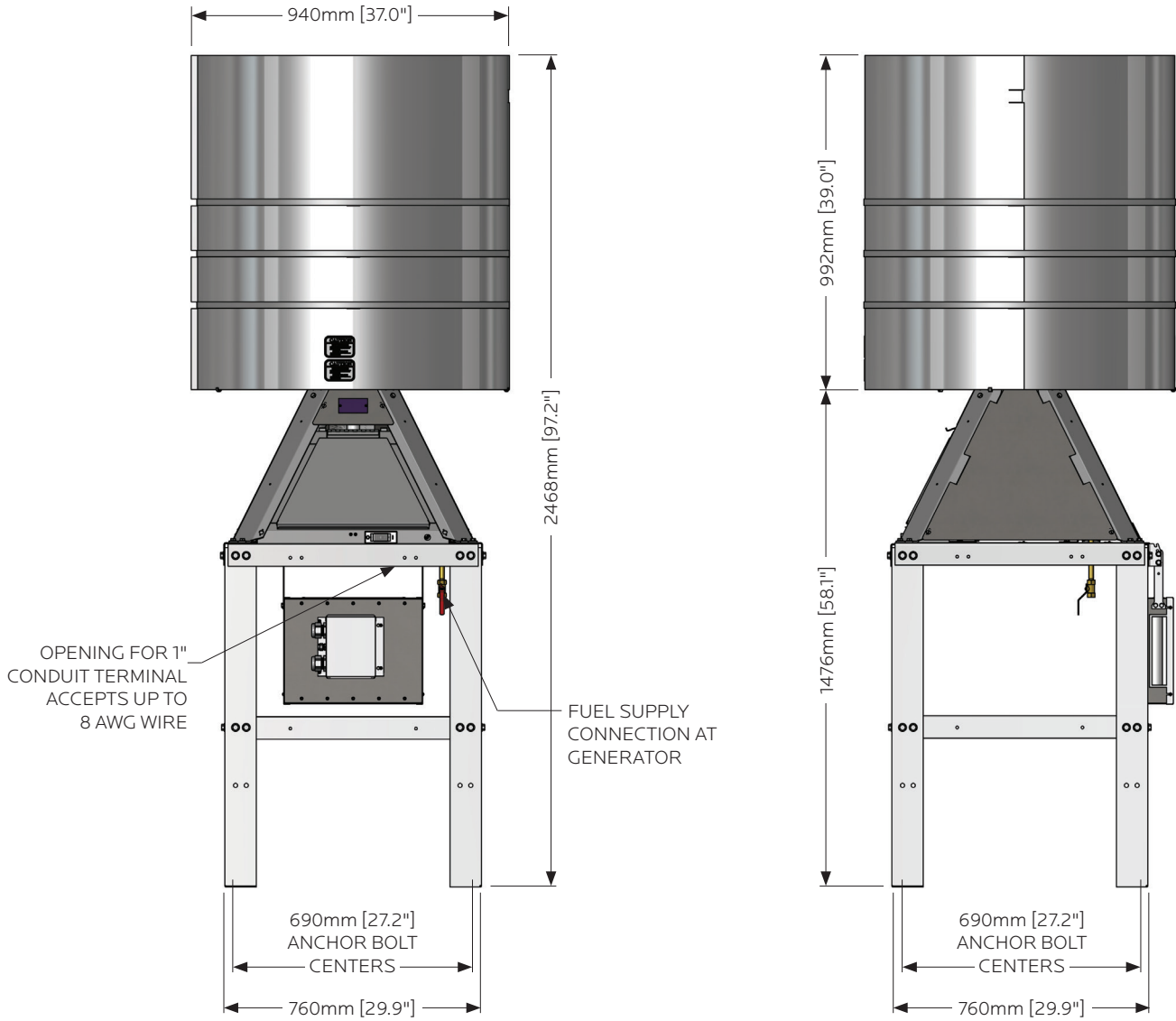
MATERIALS

Cabinet: 304 Stainless Steel (SS)
Cooling Type: Natural Convection
Fuel System: Brass, Aluminum & Stainless Steel

NOTES

Specifications shown are for standard S-8500 configurations. Global Power Technologies (GPT) also offers customized products and systems to accommodate custom voltages, fuel supply systems and operating temperatures.

Specification data stated in this document is subject to change without notice. To verify these specifications are current, please contact your GPT sales representative.








NOTES:
Generator Weight: 274 kg [604 lb]

ISO 9001:2015 REGISTERED

ETL Intertek

CE

Product Summary

Model	Power Specification (at 20°C)	Fuel Consumption at Full Power *All natural gas is Std. 1,000 BTU/SCF 37.7 MJ/Sm ³ Gas	Dimensions LxWxH mm (inches)	Weight Kg (lb)	Certifications
5030	21 Watts @ 12 Volts 21 Watts @ 24 Volts	Natural Gas: 2.1 m ³ /day (74 ft ³ /day) Propane: 3.0 l/day (0.8 US gal/day) / 1.5 kg/day Max Supply Pressure: 172 kPa (25 psig) Min Supply Pressure: 69 kPa (10 psig)	347 x 355 x 449 (14 x 14 x 18)	18 (40)	
P-5050	50 Watts @ 14 Volts 50 Watts @ 27 Volts	Natural Gas: 4.8 m ³ /day (168 ft ³ /day) Propane: 7.2 l/day (1.9 US gal/day) Max Supply Pressure: 345 kPa (50 psig) Min Supply Pressure: 103 kPa (15 psig)	774 x 387 x 991 (30.5 x 15 x 39)	41 (90)	 
P-5100	100 Watts @ 14 Volts 100 Watts @ 27 Volts	Natural Gas: 9.4 m ³ /day (332 ft ³ /day) Propane: 13.8 l/day (3.6 US gal/day) Max Supply Pressure: 345 kPa (50 psig) Min Supply Pressure: 103 kPa (15 psig)	790 x 391 x 994 (31.1 x 15.4 x 39.1)	60 (132)	 
5220	195 Watts @ 12 Volts 178 Watts @ 24 Volts	Natural Gas: 19.7 m ³ /day (700 ft ³ /day) Propane: 28.0 l/day (7.4 US gal/day) / 14.2 kg/day Max Supply Pressure: 345 kPa (50 psig) Min Supply Pressure: 165 kPa (24 psig)	810 x 450 x 1275 (31 x 18 x 50)	97 (214)	
8550	480 Watts @ 12 Volts 550 Watts @ 24 Volts 480 Watts @ 48 Volts	Natural Gas: 48 m ³ /day (1695 ft ³ /day) Propane: 76 l/day (20.1 US gal/day) / 38 kg/day Max Supply Pressure: 172 kPa (25 psig) Min Supply Pressure: 103 kPa (15 psig)	1549 x 1549 x 1016 (61 x 61 x 40)	102 (225)	
1120 Hazardous Approved (Class 1, Div. 1 or 2) (Optional Class 1, Div 1)	110 Watts @ 6.7 Volts 100 Watts @ 12 Volts 100 Watts @ 24 Volts 100 Watts @ 48 Volts	Natural Gas: 8.8 m ³ /day (311 ft ³ /day) Propane: 11.4 l/day (3.0 US gal/day) / 5.8 kg/day Max Supply Pressure: 172 kPa (25 psig) Min Supply Pressure: 69 kPa (10 psig)	797 x 602 x 1150 (32 x 24 x 45)	130 (285)	 
S-1100 Intended for Hazardous Locations	100 Watts @ 12 Volts 100 Watts @ 24 Volts	Natural Gas: 8.4 m ³ /day (295 ft ³ /day) Propane: 10.8 l/day (2.85 US gal/day) Max Supply Pressure: 172 kPa (25 psig) Min Supply Pressure: 103 kPa (15 psig)	1045 x 385 x 1077 (41.1 x 15.2 x 42.4)	178 (393)	
1500 Hazardous Approved (Class 1, Div. 2)	500 Watts @ 24 Volts	Natural Gas: 48 m ³ /day (1695 ft ³ /day) Propane: N/A Max Supply Pressure: 172 kPa (25 psig) Min Supply Pressure: 103 kPa (15 psig)	1416 x 1416 x 2899 (56 x 56 x 114)	700 (1530)	

ISO
9001:2015
REGISTERED

Specification sheets are subject to change without notice. To verify you have the most current information, please contact a Global Power Technologies representative.

*Custom configuration: please contact Global Power Technologies for more information.

REV_05