

Serving the energy industry since 1990



2023 Product Line Card-Indiana

Precision Pipeline Equipment, Inc.
253 Walnut Street
Houston, PA 15342
724-746-5427
Fax: 724-746-5428
Email: sales@precisionpipeline.com
<http://www.precisionpipeline.com>



Product Lines



CE Approved digital gauges, test pumps, automatic calibrators, test hoses and fitting kits



Digital and analog pressure gauges, test gauges, ATE handheld calibrators, dead weight testers



1.5M—56M, 1-1/2" - 8", ANSI 150# and 300/600# cartridge style rotary meters, mechanical and index drive options. Test Benches/provers.#



FM/CSA Approved catalytic heaters, instrument gas heaters, pipeline packs and enclosures



ET, EWT Globe style & segmented ball type control valves and parts



EICor® Plus Index Mounted Volume Correctors, DATCOM, pressure monitors and Pulse Accumulators



Premium Valve Distributor

Orbit, WKM 370D6 & Perar API-6D, Ball Valves, Wheatley Check Valves, Franklin Double Block & Bleed Plug Valve, API-6D



Dual Fractional Ferrule tube fittings, pipe fittings, tubing valves, quick connectors, hoses, sample cylinders and tubing tooling



Thermoelectric generators, TEG and Solar Hybrid EZ Air compressed air systems, MX off grid power generators#



Representative in Michigan and Indiana



Buy and Sell Distributor

Standard and insulated high quality Lock Wing Valves, carbon steel and stainless steel, 2 & 3 piece and seal welded ball valves#



FE, FEX and PF80 and PF 120 residential and commercial regulators#



Norval® direct acting & Aperflux® pilot operated flexible element, Reflux®-Reval® plug & seat top entry high performance regulators and slam shut valves



Product Lines



MUSTANG®

Pony and Mustang Sample Conditioning Systems, Analyzer Distribution Panels, Heated Regulators#



RMG[®]

ONE STEP AHEAD



USM GT400 and RSM200 ultrasonic meters, available in 3"- 24" line sizes, ANSI 150-2500#, Easy to use software, 6 path design AGA-9 compliant.

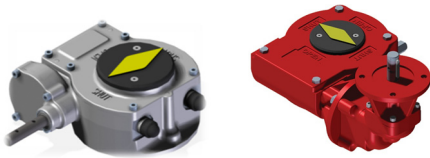
QRC Valve Distributors is a master distributor of downstream industrial globe, gate, check and butterfly valves.



rotork[®]

Gears Division

Gears and stem extensions for valves vane actuators#



rotork[®]

Fluid Systems and Controls Division

IQ3 electric, CP/GP pneumatic actuators, direct gas and gas over oil actuators



rotork[®]

Process and Instruments Division

CVA and CMA high resolution control valve actuator, K-Tork® vane actuators, Soldo® position transmitters and switch boxes & Fairchild® I-P & regulators #

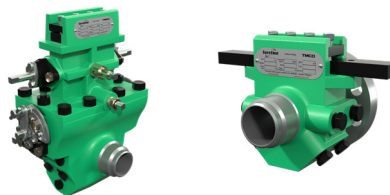


Solarcraft[™]

Industry leader in UPS power supplies, solar power systems, battery racks, integrated RTU & communications systems, skid mounted enclosures and bus stop



SureShot® Dual and Single Chamber Orifice Fittings, AGA/3 & API-14.3 meter tubes, orifice plates-seals



Dry gas and coalescing filters, ANSI 150#-900# replacement elements for all manufacturers.#

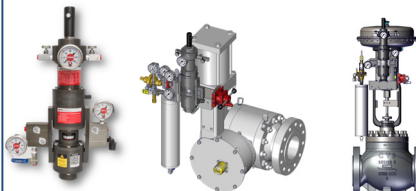


Shalepack[®]

RTU and Analyzer Buildings



VRG Non Venting VPC Pilot Controllers, VMO Manual Control Valves, Globe and Rotary Style Control Valves, ST1-STHP Stealth® quite trim control valves#



Rupture Pin and Buckling Pin ESD valves, relief valves and safety shutoff valves#



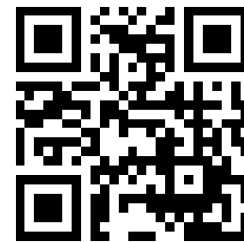


2023 Product Line Card

The State of Indiana



Precision Pipeline Equipment, Inc.
253 Walnut Street
Houston, PA 15342
724-746-5427
Fax: 724-746-5428
Email: ray.schnebelen@precisionpipeline.com
www.precisionpipeline.com



Offering experienced solutions and reliable service to the energy industry since 1990